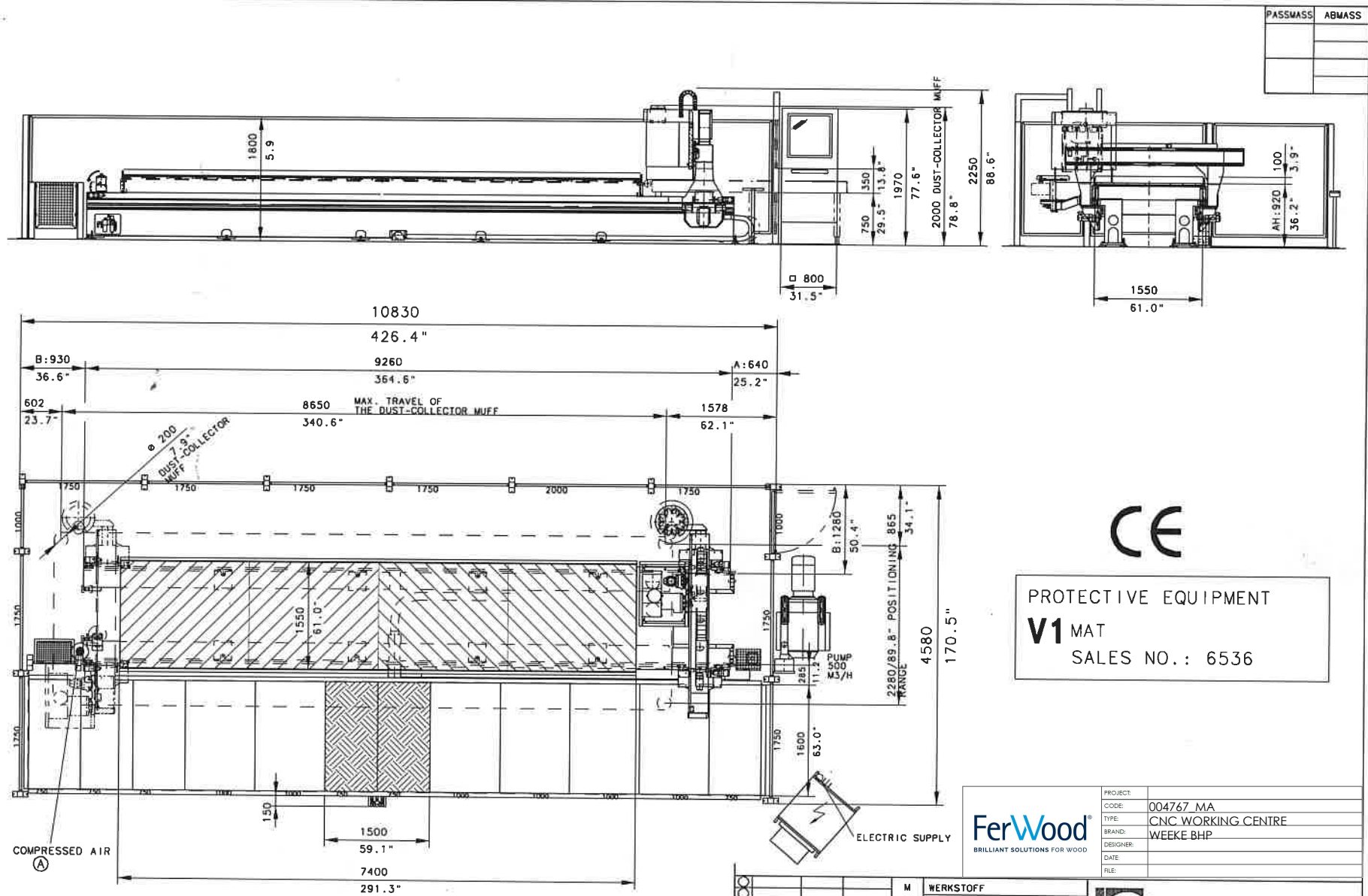
	TECHNICAL DATA		SACHGEBIET	UNTERTEILUNG
	OPTIMAT BHP 200 5' /24'			SEITE
TECHNICAL DATA		<b>OPTIMAT BHP 200 5' /24'</b>		
SPACE REQUIREMENT	LENGTH CA.	SEE INSTALLATION PLAN		
	WIDTH CA.			
	HEIGHT APPROX. :			
SUPPORTING TABLE	LENGTH :	7400 MM		
	WIDTH :	1550 MM		
	PANEL THICKNESS	100 MM		
POSITIONING RANGE	X -AXIS	8390 MM		
	Y -AXIS	2165 MM		
	Z1/2 -AXIS	325/185 MM		
SPEED	X -AXIS	50 M/MIN		
	Y -AXIS	40 M/MIN		
	Z -AXIS	15 M/MIN		
PNEUMATIC	STANDARD COMPRESSED AIR QUALITY ACCORDING TO ISO 8573- 1 QUALITY CLASS 4 IN CASE OF WATER CONTENT QUALITY CLASS 3 IN CASE OF TOTAL OIL CONTENT AND SOLID IMPURITIES			
	CONNECTION	R 1/2"		
	AIR PRESSURE IN SUPPLY LINE MIN.	7 BAA (100 PSI)		
	COMPRESSED AIR CONSUMPTION	CA.100-200 L/MIN		
DUST COLLECTION	EXTRACTION PORT :	ø200 HEIGHT APPROX. 2000		
	TOTAL DUST EXTRACTION CAPACITY	MIN. 3170 M3/H		
ATTENTION	AIR VELOCITY	MIN.28 M/SEC		
WEIGHT RELIEF	LOSS OF PRESSURE	MIN.2200 PA		
AM EXTRACTION HOSE	PROTECTION MODE	IP53		
	OPERATING VOLTAGE	3*415 VOLT, ±5%		
	FREQUENCY	50 Hz		
	NOMINAL CURRENT APPROX.	52 A		
	RECOMMENDED BACK-UP FUSE	63 A		
	TOTAL CONNECTED LOAD APPROX.	29,5 KW		
THE MACHINE IS NOT DESIGNED FOR A CONNECTION TO A NETWORK WITH FAULT CURRENT PROTECTION SWITCH				
LOADING MEASURE FOR CONTAINER	LENGTH CA.	9500 MM		
	WIDTH CA.	2300 MM		
	HEIGHT APPROX. :	2350 MM		
FOUNDATION	WEIGHT OF MASCHINE APPROX 7800KG			
	SURFACE PRESSURE IN THE AREA OF THE POINTS OF SUPPORT: 1,20 N/MM2			
	THICKNESS OF CONCRETE MIN. 200 MM (7.9")			
	CONCRETE QUALITY B25 CAPABLE OF BEARING PRESSURE AND TENSION			
	THE FOUNDATION HAS TO BE AT GROUND LEVEL			
FOR THE ROOM CONDITIONS DURING MACHINE OPERATION PLEASE SEE OUR SAFETY REGULATIONS				
GEZ.: Steiling C	CTRL BY:	WEEKE BOHRSYSTEME GmbH D-33442 HERZEBROCK-CLARHOLZ		60 ZEICHNUNGS-NR. 5-320-95-2910
DATUM: 10.10.2005				

SUBJECT TO CHANGE

ZULÄSSIGE ABWEICHUNGEN ÜBER MASSE OHNE TOLERANZANGABE									
NENNMASSEBEREICH (mm) FÜR									
MAßSTAB	1:1	1:2	1:5	1:10	1:20	1:50	1:100	1:200	1:500
ABW.	±0,1	±0,15	±0,2	±0,3	±0,5	±0,8	±1,0	±1,6	±2,5
ABW.	±0,1	±0,15	±0,2	±0,3	±0,5	±0,8	±1,0	±1,6	±2,5
ABW.	±0,1	±0,15	±0,2	±0,3	±0,5	±0,8	±1,0	±1,6	±2,5
ABW.	±0,1	±0,15	±0,2	±0,3	±0,5	±0,8	±1,0	±1,6	±2,5
ABW.	±0,1	±0,15	±0,2	±0,3	±0,5	±0,8	±1,0	±1,6	±2,5
ABW.	±0,1	±0,15	±0,2	±0,3	±0,5	±0,8	±1,0	±1,6	±2,5
ABW.	±0,1	±0,15	±0,2	±0,3	±0,5	±0,8	±1,0	±1,6	±2,5
ABW.	±0,1	±0,15	±0,2	±0,3	±0,5	±0,8	±1,0	±1,6	±2,5



CE  
 PROTECTIVE EQUIPMENT  
**V1** MAT  
 SALES NO.: 6536

PROJECT	004767_MA
CODE	CNC WORKING CENTRE
TYPE	WEEKE BHP
BRAND	
DESIGNER	
DATE	
FILE	

**FerWood**  
 BRILLIANT SOLUTIONS FOR WOOD

**WEEKE** Bohrsysteme GmbH

ABW. NR.	DATUM	NAME	M	WERKSTOFF
10	03.11.2005	Stelling C	1:50	ROHMASS
GEAN.	03.11.2005	Stelling C		MAT. -NR.
KTRL.				
BENENNUNG			ZEICHNUNGS-NR.	
SETTING UP PLAN			5-320-95-2900	
OPTIMAT BHP 200 5'/24'				
60 Copyright reserved			CADAM A3	
			BL.1	BL.2.1

• CONNECTION DIMENSIONS FOR SAFETY FENCE SEE LAYOUT PLAN

PASSWALL	ABMASS

9260 364.6" LENGTH OF FRAME

PROTECTION EQUIPMENT ENCLOSURE FENCE

9235 383.6" 3810 382.8" 7259 285.8" 5340 210.2" 3625 142.7" 1896 74.6"

10 0.4" 290 11.4" 150 5.9" 1010 39.8" 1310 51.6"

2x PRESSURE PLATE WITH ARMATURE ROD

10x PLATE ONLY COUNTER PRESSURE

100 3.9" 100 3.9"

SURFACE PRESSURE IN THE AREA OF THE POINTS OF SUPPORT: 1.20 N/MM<sup>2</sup>

2x PRESSURE PLATE WITH ARMATURE ROD

245 9.6"

9750 387.2"


A\* B\* 145 5.7" 89/2.3" 600 23.6" 390 15.4" 600 23.6" 1241/48.9"

IN CASE OF FLEXIBLE AND UNIFORM UNDERGROUND, WE RECOMMEND STRIP FOUNDATIONS MIN. 600MM WIDE

PASSMASS	ABMASS

IN CASE OF FLEXIBLE  
AND UNFIRM UNDERGROUND,  
WE RECOMMEND STRIP FOUNDATIONS MIN.  
500MM WIDE

PROJECT:	
CODE:	004767_MA
TYPE:	CNC WORKING CENTRE
BRAND:	WEEKE BHP
DESIGNER:	
DATE:	
FILE:	

			M	WERKSTOFF		Bohrsysteme GmbH
			1:33	ROHMASS		
AB	AEND_NR.	DATUM	NAME	MAT.-NR.		
REARBEITET	DATUM	NAME	BENENNUNG			ZEICHNUNGS-NR.
GEANFERTIGT	10.10.2005	Stelling C	FOUNDATION PLAN			5-320-95-2560
KTRL			ML: 9260 (AL:7400)			
60	Copyright reserved		CADAM A3		BL.1	RI.-Z.