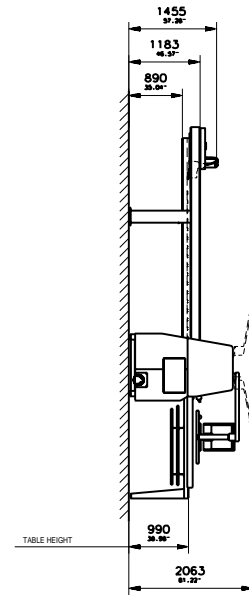
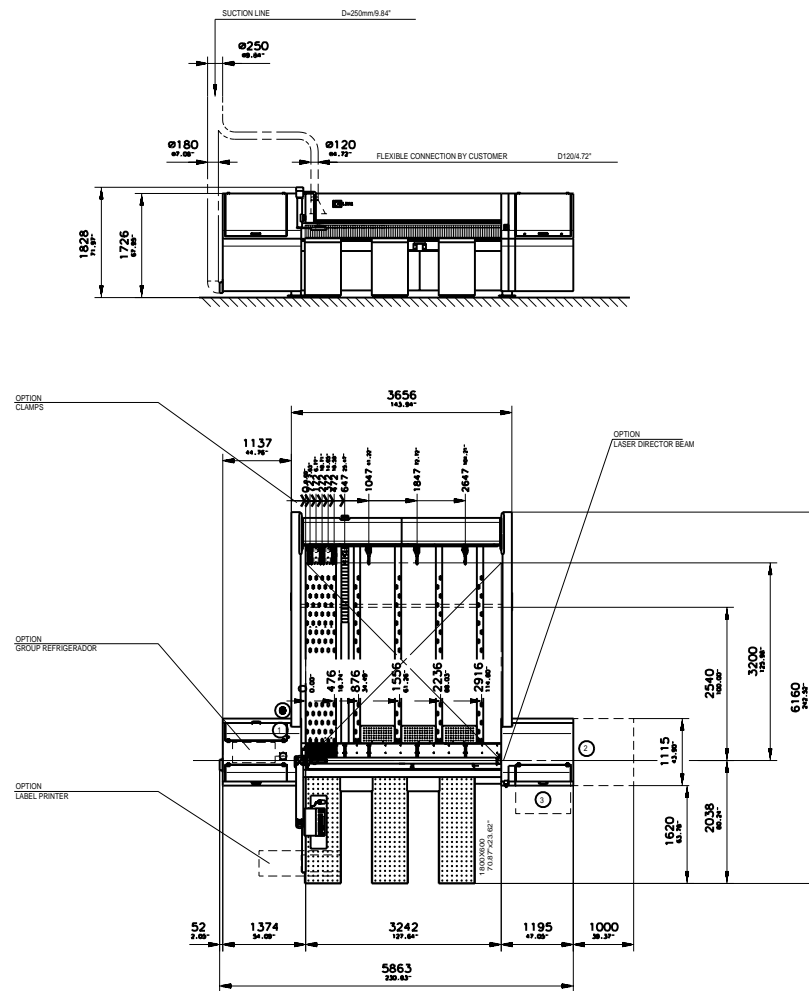




OPTIMAT HPP250/32/32  
0-341-07-6926



TYPE	OPTIMAT HPP250/32/32
FOR APPROVAL:	
DATE:	----- SIGNED: -----
VERIFIED:	
DATE:	----- SIGNED: -----
PLEASE RETURN THE APPROVED DRAWING IMMEDIATELY, OTHERWISE DELIVERY MAY BE DELAYED	
SUBJECT TO CONSTRUCTIVE MODIFICATIONS WITHOUT OUR PERMISSION THIS DRAWING MUST NOT BE REPRODUCED NOR DUPLICATED NOR MADE ACCESSIBLE TO THIRD PARTIES OR COMPETITORS	
#1-11	LAW OF 19.06.1991
1 MAIN ELECTRICAL CONNECTION	
2 SPACE REQUIREMENT MAIN TENANCE	
3 ROOM FOR SAW BLADE CHANGE PNEUMATIC CONNECTION 12"	
4 SUPPLY 2"	
X SUCTION NOZZLE	
5 SAFETY LIGHT BARRIER	
CONCRETE QUALITY B25 CAPABLE OF BEARING PRESSURE AND TENSION THICKNESS OF CONCRETE MIN. 200 MM 7"9" EVENNESS OF FLOOR: TOLERANCE $\pm 10$ MM $\pm 0.4$ "	
GROUTING BY CUSTOMER OF THE MOUNTING PLATES WITH CASTING COMPOUND RESISTANT TO SHRINKING AFTER INSTALLATION	
REPRESENTATION AND DIMENSIONING OF INSTALLATIONS PROVIDED BY THE CUSTOMER AND MACHINES OF FOREIGN BRAND WITHOUT GUARANTEE	
MAXIMUM PANEL SIZE	3200 x 3200 mm 125.98 x 125.98"
MINIMUM PANEL SIZE	... x ... mm ... x ..."
SAW BLADE PROJECTION	72 mm 2.83"
CUTTING LENGTH RIP SAW	3200 mm 125.98"
CUTTING LENGTH TRIM SAW	... mm ..."
MAIN SAW MOTOR	7.5 KW
MAIN SAW MOTOR	9.2 KW
TOTAL CONNECTED LOAD	14.0 KW
TOTAL CONNECTED LOAD	16.0 KW
AIR PRESSURE REQUIRED*	
TOTAL AIR REQUIREMENTS FOR 10m/14.5psi	
SUCTION CAPACITY	
AIR VELOCITY	



PROJECT:	
CODE:	004726_MA
TYPE:	CNC BEAM SAW MACHINE
BRAND:	HOLZMA HPP 250/32/32
DESIGNER:	
DATE:	
FILE:	