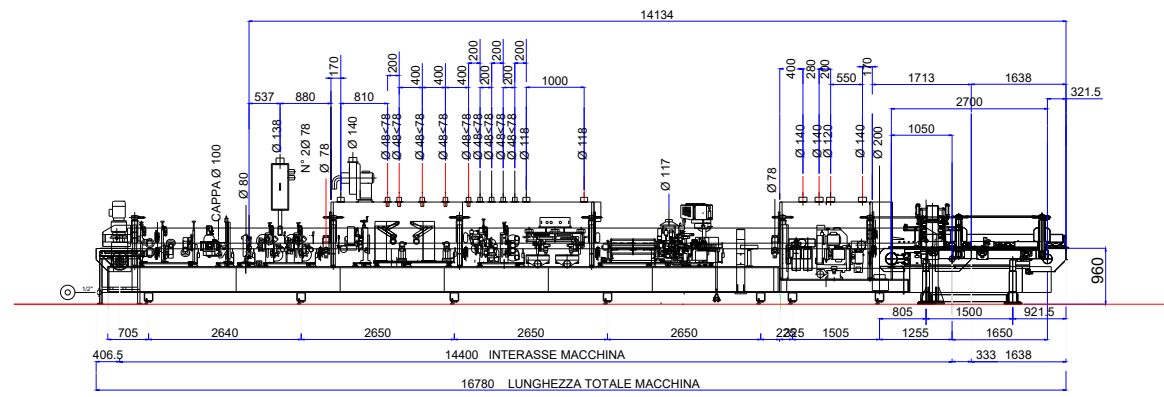
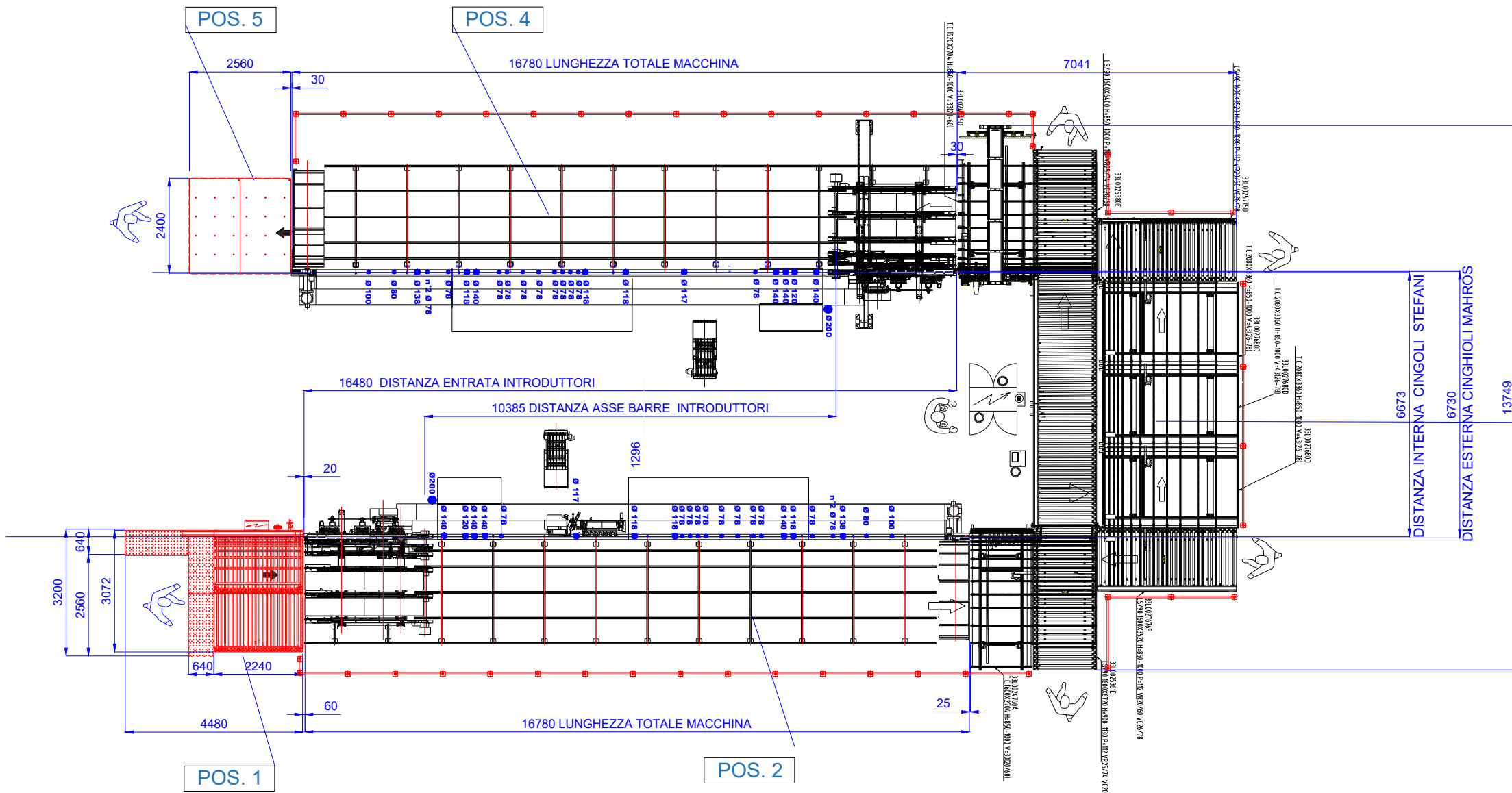


**LAY-OUT DATI TECNICI**  
**LAY-OUT TECHNICAL DETAILS**



Diameter Hoods	Quantity
Diametro 78	13
Diametro 80	1
Diametro 100	1
Diametro 117 (Colla)	1
Diametro 118	1
Diametro 120	2
Diametro 138	1
Diametro 140	5
Diametro 200	1

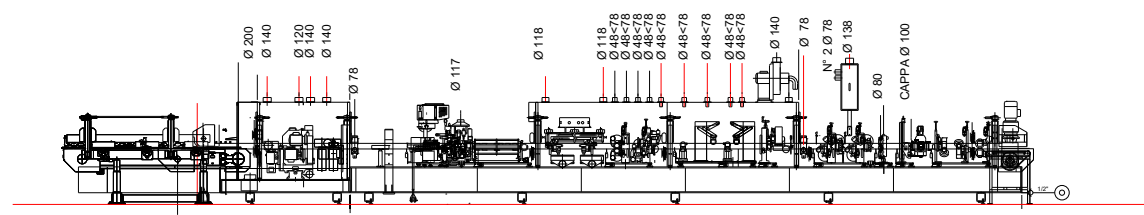


POS. 1	LOADING AUTOMATION	005604	MAHROS
POS. 2	SINGLE SIDED EDGEBANDER	005601	STEFANI EBOLUTION SB 1
POS. 3	TRANSFER	005605	MAHROS
POS. 4	SINGLE SIDED EDGEBANDER	005606	STEFANI EBOLUTION SB 1
POS. 5	UNLOADING AUTOMATION	005607	MAHROS

**CONSUMO TOTALE LINEA**  
**TOTAL CONSUMPTION LINE**

ARIA ASPIRATA SUCTION AIR	<b>mc/h a 30 m/s : 43200</b>
ARIA COMPRESSA COMPRESSED AIR	<b>NL/min : 4550</b>
ARIA ASPIRATA GRUPPO INCOLLAGGIO SUCTION AIR GROUP GLUEING	<b>(mc/h a 30 m/s) : 2760</b>
POTENZA ELETTRICA ELECTRICAL POWER	<b>KW 217,5</b>

Diameter Hoods	Quantity
Diametro 78	13
Diametro 80	1
Diametro 100	1
Diametro 117 (Colla)	1
Diametro 118	1
Diametro 120	2
Diametro 138	1
Diametro 140	5
Diametro 200	1

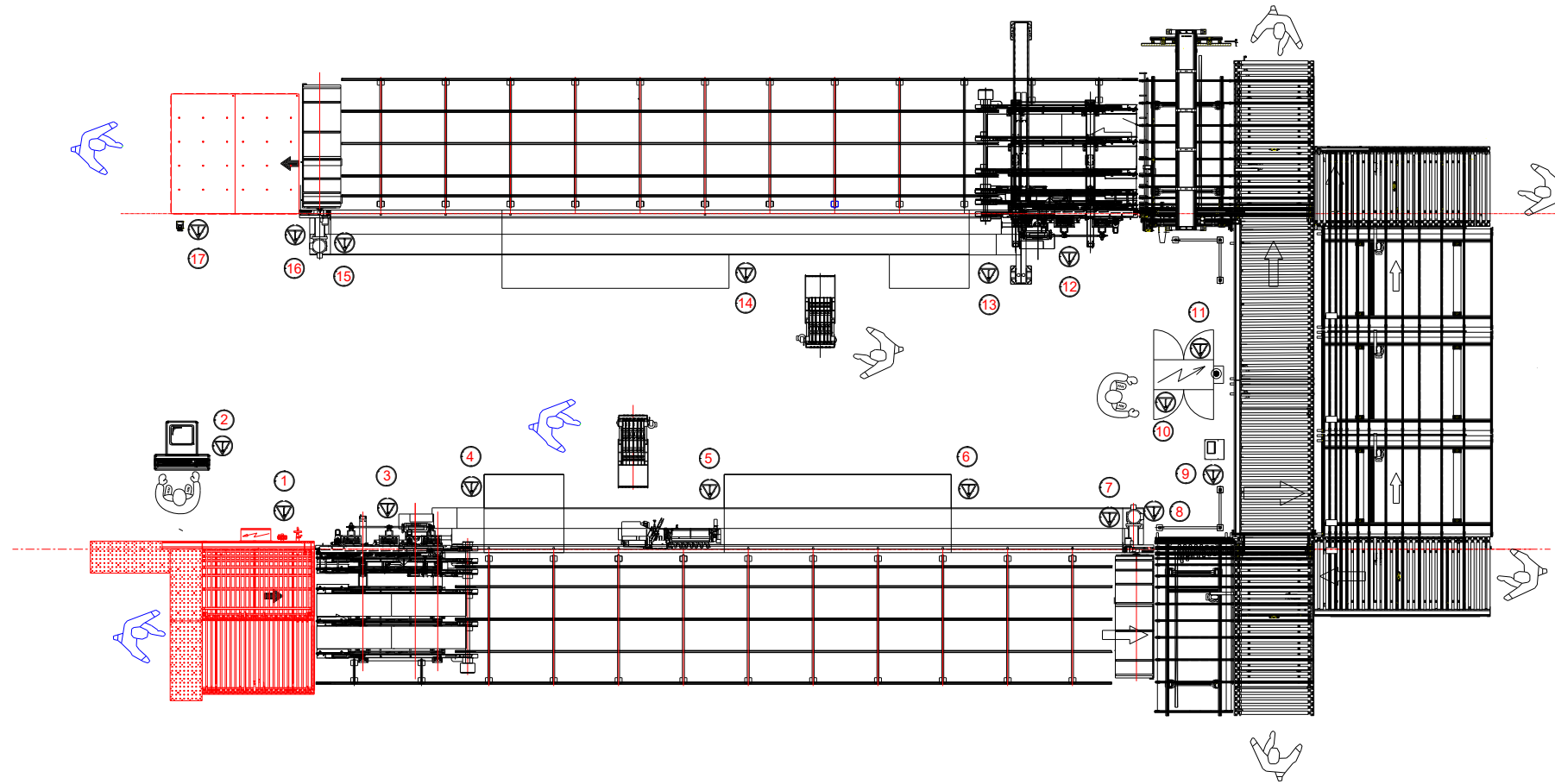


Disegnatore:	Ferwood srl
Titolo:	005608_OL1
Descrizione:	Production Line SCM STEFANI
Data:	Sistema:  Model 1
	Foglio: A3

**FerWood®**  
BRILLIANT SOLUTIONS FOR WOOD

FerWood srl - Via Langhe 4/A 1204~ Pollenzo (CN) Italy  
Tel. +39 0172 474073 - fax: +39 0172 471442  
email: [info@ferwoodgroup.com](mailto:info@ferwoodgroup.com)

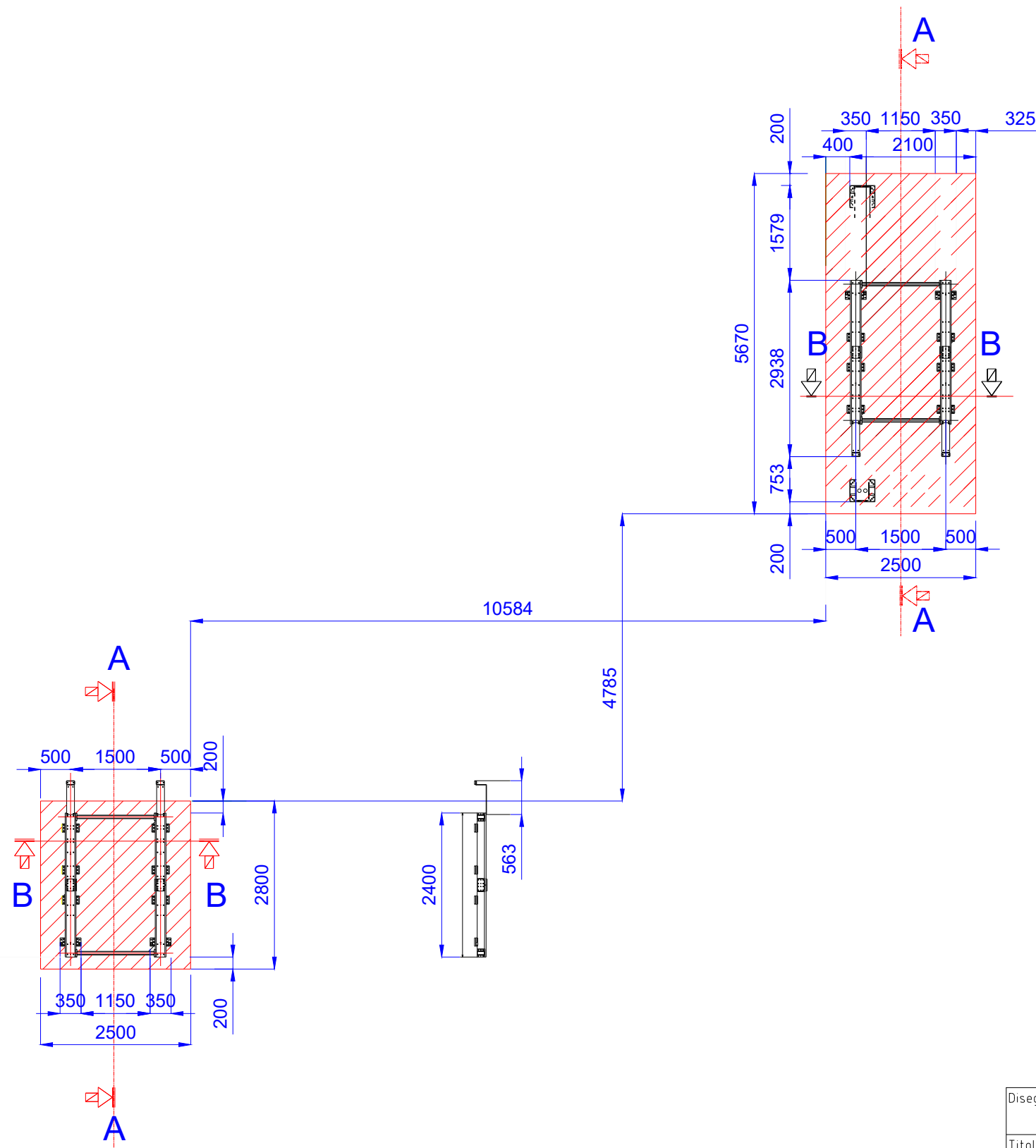
**LAY-OUT EMERGENCY DATA**  
**LAY-OUT TECNICO DISPOSITIVI DI ARRESTO DI EMERGENZA**





PULSANTI E FUNI DI EMERGENZA  
 SAFETY DEVICE

Disegnatore: Ferwood srl		 <b>BRILLIANT SOLUTIONS FOR WOOD</b> FerWood srl - Via Langhe 4/A 1204 ~ Pollenzo (CN) Italy Tel. +39 0172 474073 - fax: +39 0172 471442 email: info@ferwoodgroup.com
Titolo: 005608_OLI		
Descrizione: Production Line SCM STEFANI		
Data:	Sistema:	Model 2
		Foglio: A3
Tutti i diritti sono riservati da Copyright. vietata la riproduzione		All rights reserved by Copyright. is forbidden to reproduce

**LAY-OUT TECNICO FONDAZIONI**  
**LAY-OUT FOUNDATION**

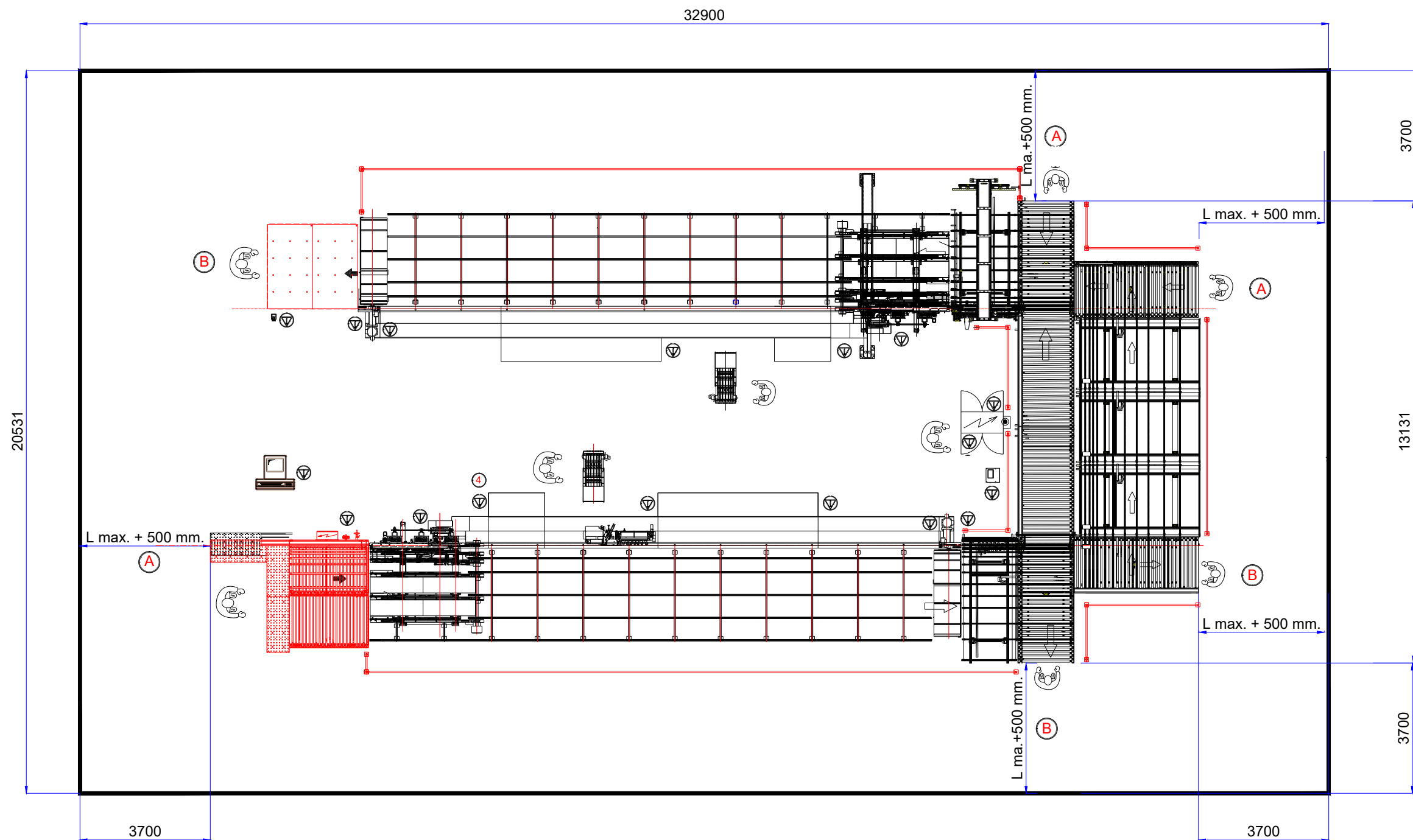


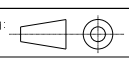
Disegnatore: Ferwood srl		 <b>BRILLIANT SOLUTIONS FOR WOOD</b>
Titolo: 005608_OLI		
Descrizione: Production Line SCM STEFANI		FerWood srl - Via Langhe 4/A 12047 Pollenzo (CN) Italy Tel. +39 0172 474073 - fax: +39 0172 471442 email: info@ferwoodgroup.com
Data:	Sistema:  Model 3	
	Foglio: A3	
Tutti i diritti sono riservati da Copyright <sup>®</sup> vietata la riproduzione All rights reserved by Copyright <sup>®</sup> is forbidden to reproduce		

LAY- OUT TECNICO AREA DI LAVORO

LAY- OUT WORK AREA

Perimetro di lavoro per garantire un facile e sicuro accesso agli operatori addetti e ai manutentori  
 Entrata uscita pannelli (A-B) lunghezza Max pannello + 500mm, zona di passaggio (C) 1000 mm



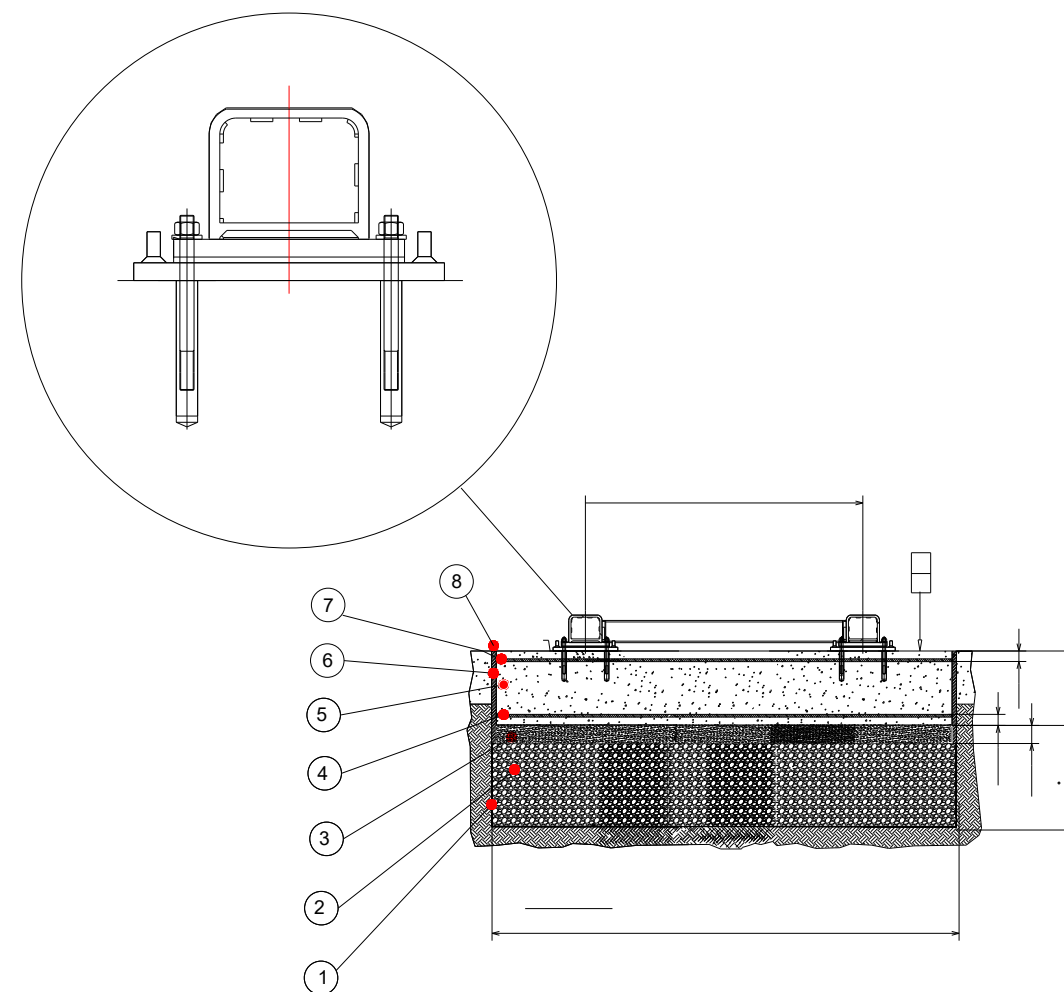
Disegnatore: Ferwood srl	
Titolo: 005608_OL1	
Descrizione: Production Line SCM STEFANI	
Data:	Sistema:  Model 4
Foglio: A3	


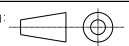
**FerWood®**  
 BRILLIANT SOLUTIONS FOR WOOD  
 FerWood srl - Via Langhe 4/A 1204~ Pollenzo (CN) Italy  
 Tel. +39 0172 474073 - fax: +39 0172 471442  
 email: info@ferwoodgroup.com

Tutti i diritti sono riservati da Copyright. vietata la riproduzione All rights reserved by Copyright. is forbidden to reproduce

**PARTICOLARE FONDAZIONI**  
**PARTICULAR FOUNDATION**

1	Telo tessuto non tessuto ( se il terreno è argilloso ) In the case of clayey ground, place a 400 g/m <sup>2</sup> nonwoven fabric cloth over the ground
2	Ghiaia compatta ( Ø20 - Ø25 mm.) ( lo spessore massimo è previsto per terreni non coesi ) Compact gravel (Stabilised) Ø 20- Ø25mm
3	Calcestruzzo Rbk >= 30 N/mm <sup>2</sup> ( 300 Kp/cm <sup>2</sup> ), spessore 400 mm Concrete with Rbk >= 30 N/mm <sup>2</sup> ( 300 Kp/cm <sup>2</sup> ), thickness 400 mm
4	Rete in acciaio FeB32k elettrosaldata Ø 10 mm. con lato max. 200x200 mm. Electrically welded FeB32K steel netting Ø 10 mm. with side max. 200x200 mm.
5	Calcestruzzo Rbk >= 30 N/mm <sup>2</sup> ( 300 Kp/cm <sup>2</sup> ) spessore 400 mm Concrete with Rbk >= 30 N/mm <sup>2</sup> ( 300 Kp/cm <sup>2</sup> ), thickness 400 mm
6	Giunto di dilatazione in foglio ( Elastomero Sylomax "M" spessore 25 mm. o polistirolo spessore 20-25 mm ) Dilation joints in an elastomeric foil type Sylomax "M", thickness 25 mm (as an alternative, use polystyrene with the same thickness: 20/25 mm.)
7	Rete in acciaio FeB32K elettrosaldata Ø 6 mm. con lato max. 200x200 mm. Electrically welded FeB32K steel netting Ø 6 mm. with side max. 200x200 mm.
8	Resina elastica impermeabile ( per sigillare le giunture verticali ) Elastic Resin Waterproof



Disegnatore: Ferwood srl		 <b>BRILLIANT SOLUTIONS FOR WOOD</b> FerWood srl - Via Langhe 4/A 12047 Pollenzo (CN) Italy Tel. +39 0172 474073 - fax: +39 0172 471442 email: info@ferwoodgroup.com
Titolo: 005608_OLI		
Descrizione: Production Line SCM STEFANI		
Data:	Sistema: 	Model 5
		Foglio: A3
Tutti i diritti sono riservati da Copyright <sup>©</sup> vietata la riproduzione All rights reserved by Copyright <sup>©</sup> is forbidden to reproduce		