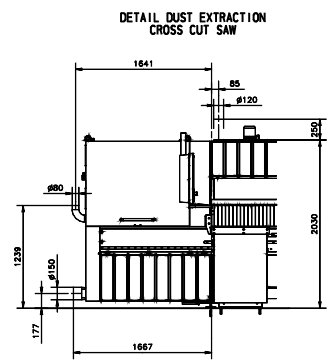
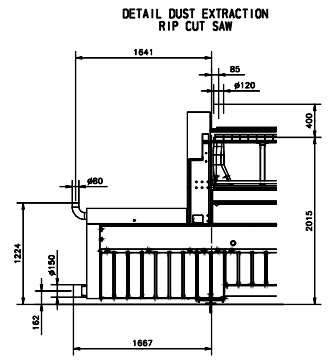


- Rip cut saw**
 - dust extraction in the pressure beam #120
 - 2015 - 2415 mm over floor
 - dust extraction #150
 - 177 mm over floor
 - dust extraction #80
 - 1884 mm over floor
- Cross cut saw**
 - dust extraction in the pressure beam 2x #120
 - 2030 - 2280 mm over floor
 - dust extraction #150
 - 177 mm over floor
 - dust extraction #80
 - 1239 mm over floor

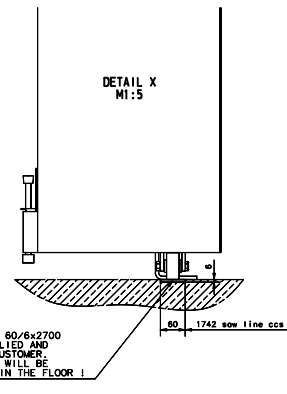
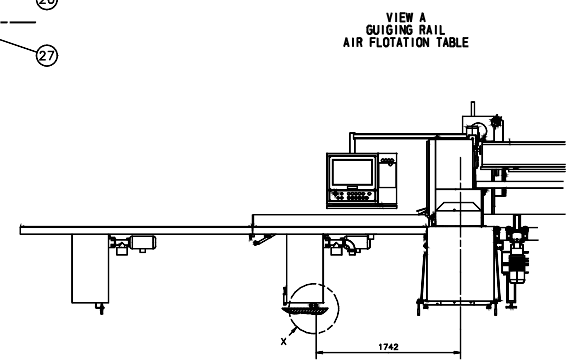


- MACHINE SUPPORTING AREA**
The thickness of the concrete has to be at all pre-defined areas at least 8" (200 mm) !
including cut outs and pits for the scissor lift, tracks, etc !
quality of concrete : C20/25 reinforced (DIN EN 206-1)
3200 pounds per square inch after 28 days (suitable for straddling dowels)
- MAIN ENTRY**
approx. 95 kVA / 400 V / 50 Hz / 3 phase
- COMPRESSED AIR REQUIREMENT**
approx. 3200 l/min at 1 bar pressure
working pressure : 6 bar excess pressure
- SERVICE UNIT**
R 3/4" (supply R 1 1/2")
Height of service unit approx. 1600 mm
- DUST EXTRACTION**
approx. 8000 m³/h at 32 m/s air speed
under pressure 2000 Pa at the saw

Level-line of rip cut saw : 970 mm
Level-line of cross cut saw : 985 mm
SBW - change of saw blade

NOTICE
It is absolutely necessary to incorporate a separate earth line !
Earth line of pipes is not permitted !

PERFORMANCE OF CUSTOMER
Provision of pits for scissor lift and cable conduits, connections for electric power, compressed air and dust extraction, and required pedestals, stairways and handrails at the machine.
In the suction pipe for the suction connection place (d120) at the pressure beam a pneumatic flap must be installed above the saw. This flap has to be reversible in two positions.
First position - suction is open
second position - suction is open between 0 and 50 percent
The controlling is made by Schelling
Dust extraction diameter 80 and 120 :
Connection with flexible pipe or cleaning-flap in the band.
All suction connections have to be removed easily.



GUIDING RAIL 60/6x2700
MUST BE SUPPLIED AND MOUNTED BY CUSTOMER.
GUIDING RAIL WILL BE COUNTER-SUNK IN THE FLOOR !

- infeed roller track for stacks (supplied by Schelling China)
- infeed roller track for stacks (supplied by Schelling China)
- waste box (supplied by customer)
- person protection light barrier
- spindle lift table with roller track
- feeder with clamps
- push off carriage
- feeder guides dual
- turning device
- roller table
- book aligner
- saw machine ohB 330
- transfer table with waste flap
- transfer carriage
- feeder guides dual
- feeder with clamps
- angular transfer table
- strip aligner
- fence raise/lift table
- saw machine ohB 330
- strip aligner in pressure beam
- control desk
- air floatation table, moveable
- air floatation table, fix
- protection grid (supplied by Schelling China)
- waste chute
- vibrating conveyor
- guillotine machine
- waste conveyor
- air floatation table, fix
- scissor lift (supplied by Schelling China)
- manual stacking device (supplied by Schelling China)
- label printer

IMPORTANT!
We kindly ask you to check this drawing carefully, if we do not receive any written comment within 3 weeks from the date of drawing dispatch, we will consider this drawing as accepted.
Schelling Antriebsbau GmbH
Mechanische
z.N. Vertrieb
GmbH - Schellingstr. 34
4055 SCHWABACH
AUSTRIA

In the loading and unloading area of the fork lift track close to the plant a colliding protection has to be provided by the customer !

Disegnatore:	Ferwood srl
Titolo:	005445_MA
Descrizione:	Angular beam Saw machine SCHELLING AH 8
Versione:	1
Data:	Sistema Foglio A3
Data:	

FerWood®
BRILLIANT SOLUTIONS FOR WOOD

FerWood srl - Via Langhe 4/A 12047 Pollenzo (CN) Italy
Tel. +39 0172 474073 - fax. +39 0172 471642
email: info@ferwoodgroup.com