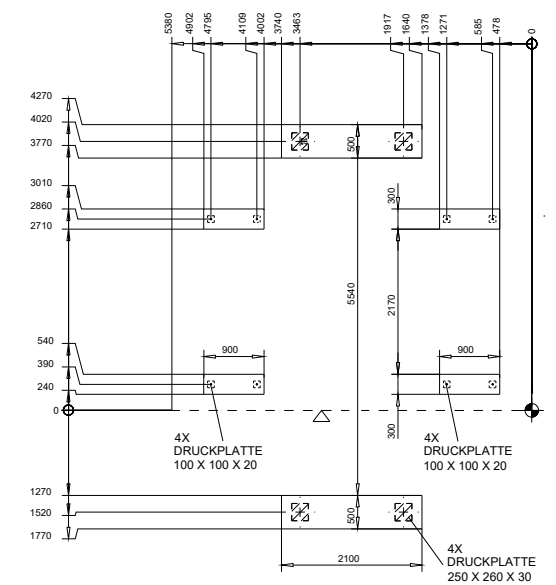
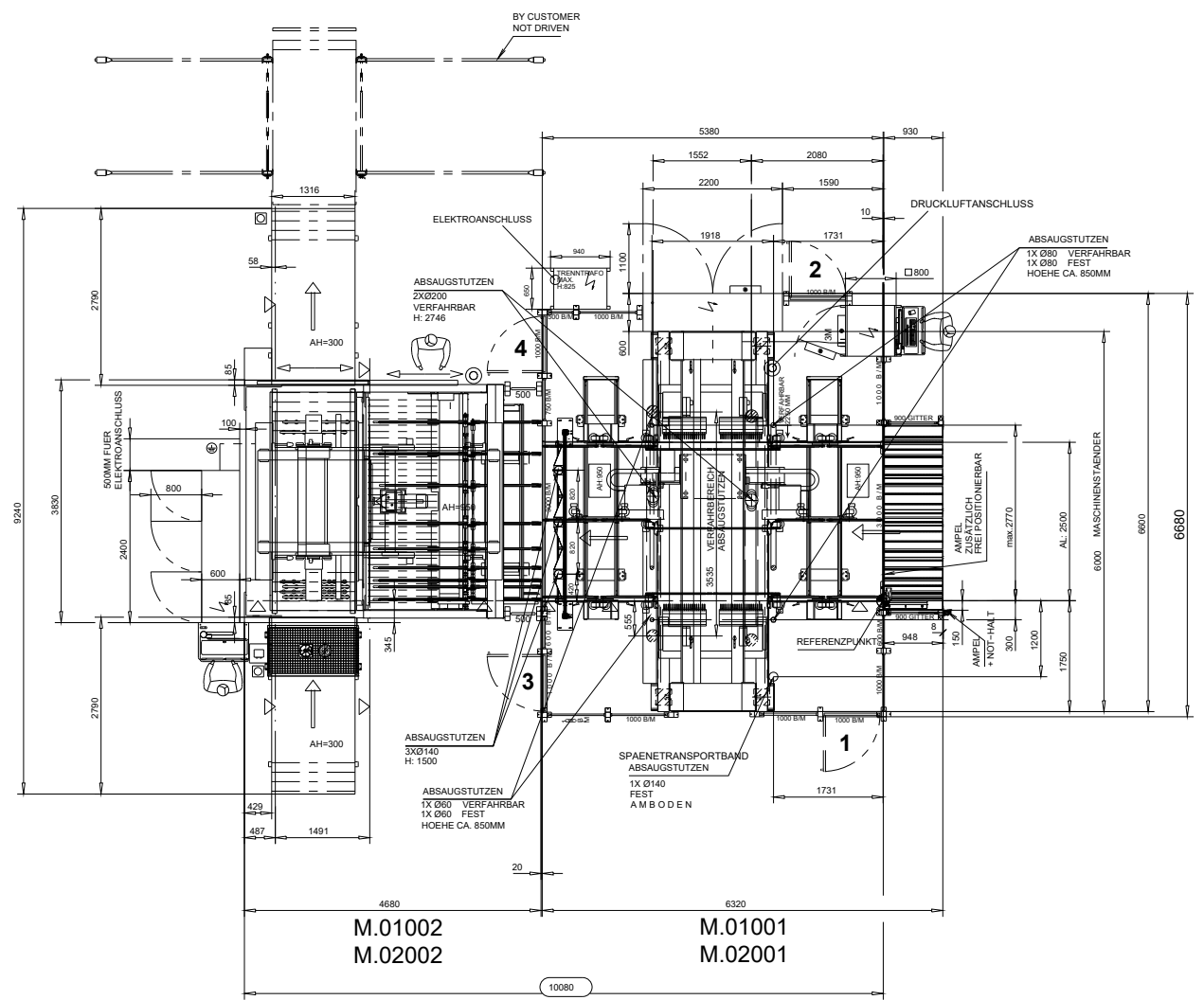


HOMAG AUTOMATION
 FUNDAMENT MUSS EBENERDIG SEIN
 INDUSTRIEBETONFUSSBODEN, STAHLARMIERT
 BETONQUALITÄT C25/30 XC1 ZUG-/DRUCKBELASTBAR
 BETONDICKE AUSSERHALB DER FUNDAMENTE MIND. 180 MM
 FUNDAMENTTIEFE JE NACH BODENBESCHAFFENHEIT, MIND. JEDOCH 220 MM
 MAX. BODENBELASTUNG IM BEREICH DER MASCHINENBETTEN CA. 1,5 N/MM²
 BODENEBCHEIT: TOLERANZ = +/- 10MM



Disegnatore: FerWood spa		 BRILLIANT SOLUTIONS FOR WOOD FerWood spa - Via Langhe 4/A 12042 Pollenzo (CN) Italy Tel: +39 0172 474073 - fax: +39 0172 471442 email: info@ferwoodgroup.com
Titolo: 007326_La		
Descrizione:		
Data:	Sistema:	
		Foglio: A3

Tutti i diritti sono riservati da Copyright. È vietata la riproduzione. All rights reserved by Copyright. It is forbidden to reproduce.