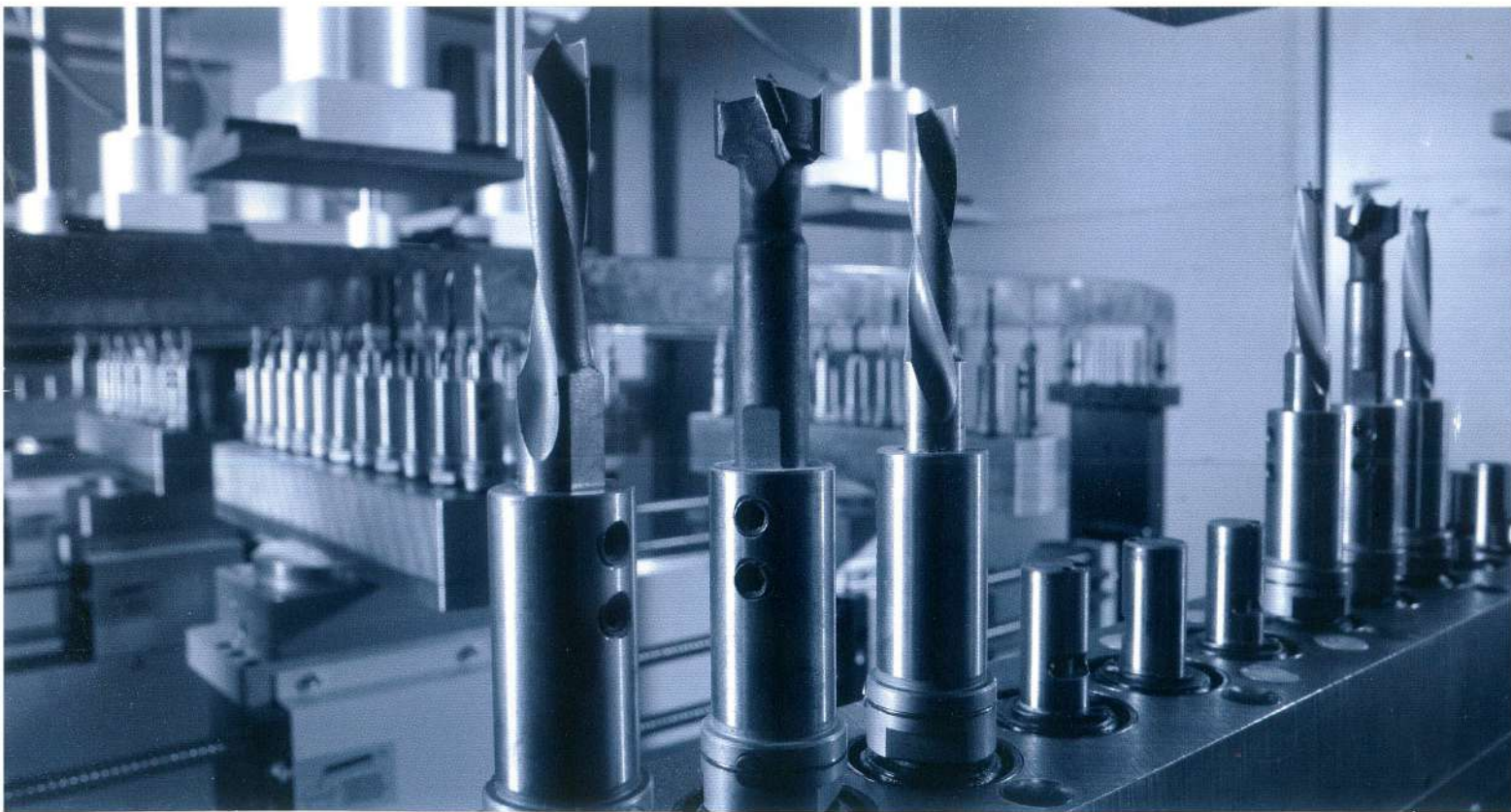


Throughfeed Drilling Machines Optimat BST Series



Optimat BST 501 / 503 / 505 / 507

"...it is an immutable law in business that words are words, explanations are explanations, promises are promises but only performance is reality."

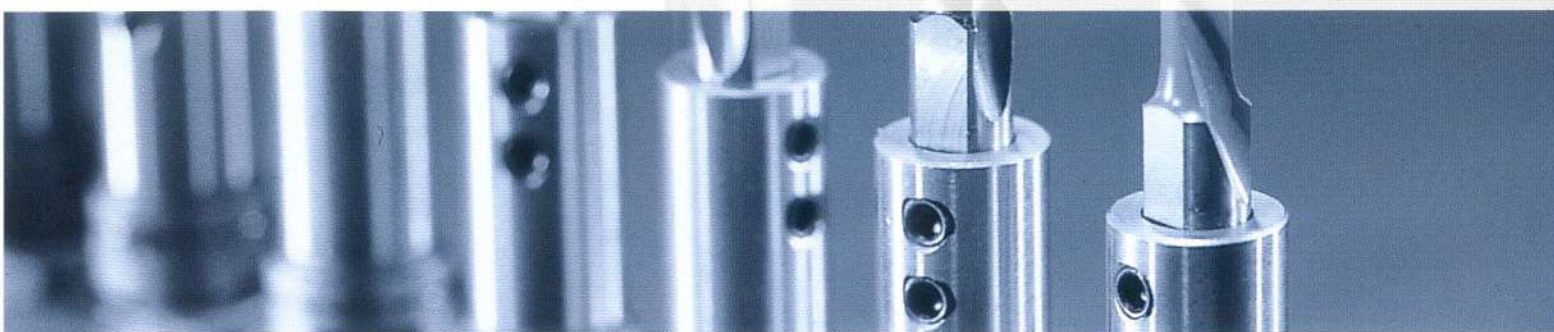
Harold S. Geneen





Contents

	Page
Optimat BST 503	4 / 5
Optimat BST 505	6 / 7
Optimat BST 507	8 / 9
Optimat BST 501	10 / 11
Basics	12 / 13
Options	14 / 15
Software	16 / 17
Systems	18 / 19



BST 503

EFFICIENT POWER

Highlights:

- Auxiliary free resetting of processing aggregates
- Positioning aid system for machine set-up - automatic clamping when reaching the position
- Position control system of the supports and drilling motors during production
- High flexibility due to the proven exchangeable drilling block system
- Integrated broad chip transport belt to cover the complete drilling range
- Separated transport system - with 3 individually driven sections
- PC based control with TFT-Monitor
- Ethernet „on Board“
- Front USB interface
- woodWOP Programming System on the machine
- Operator friendly surface topDrill





Pictures may also show options.

Technical data of the Basic Equipment

Optimat BST 503

Number of vertical supports bottom	4
Number of vertical supports top	—
Vertical drilling block with 11 spindles	8
Horizontal drilling block with 21 spindles	2
Horizontal drilling block with 11 spindles	—
NC-Stop	—
Machine dimensions L / W / H	5500 / 3710 / 2000 mm
Working height	950 mm
Workpiece dimensions L / W	250 - 2500 mm / (80°) 100 - 1000 mm
Workpiece thickness	12 - 60 mm
Chip conveyor belt	✓
Weight	8000 kg

✓ = contained in the Basic Equipment • = optionally available — = not available

* only for single machine 5

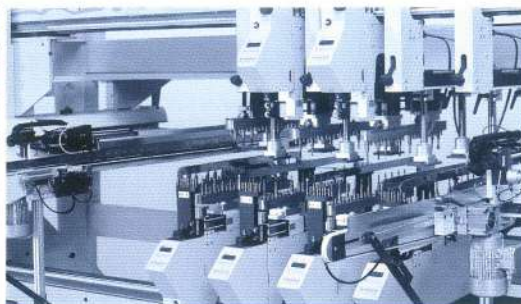
BST 505

POWERFUL PERFORMANCE

Highlights:

- Auxiliary free resetting of processing aggregates
- Positioning aid system for machine set-up - automatic clamping when reaching the position
- Position control system of the supports and drilling motors during production
- High flexibility due to the proven exchangeable drilling block system
- Integrated broad chip transport belt to cover the complete drilling range
- Separated transport system - with 3 individually driven sections
- PC based control with TFT-Monitor
- Ethernet „on Board“
- Front USB interface
- woodWOP Programming System on the machine
- Operator friendly surface topDrill





Pictures may also show options.

Technical data of the Basic Equipment

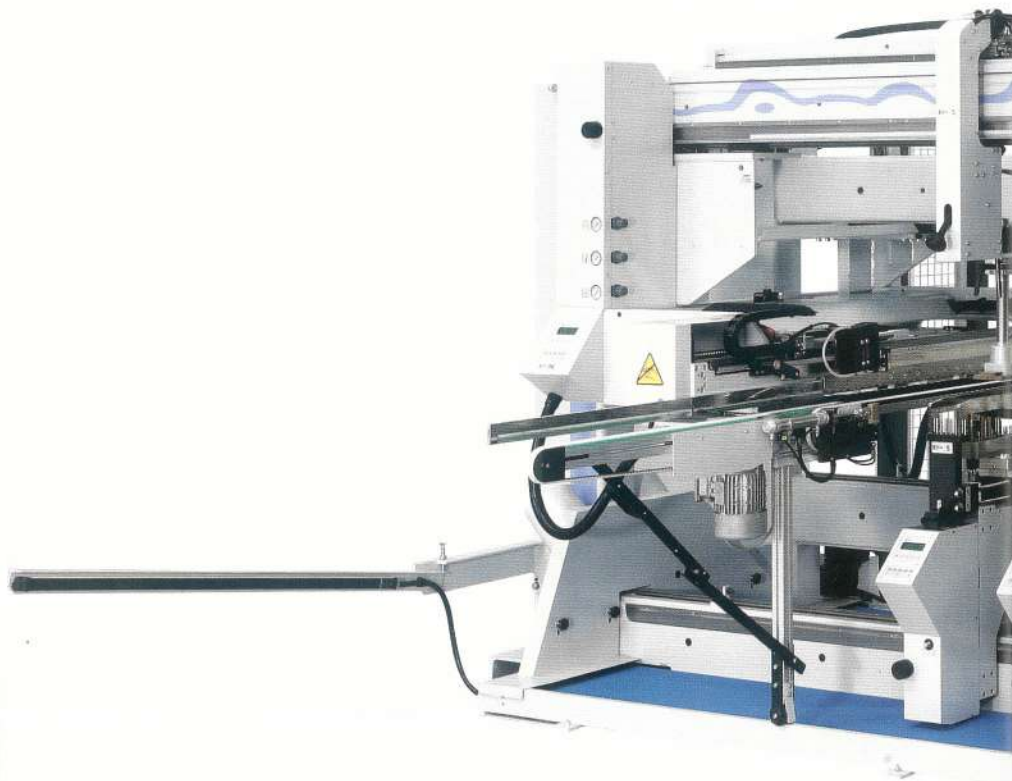
Number of vertical supports bottom	4
Number of vertical supports top	2
Vertical drilling block with 11 spindles	12
Horizontal drilling block with 21 spindles	2
Horizontal drilling block with 11 spindles	–
NC-Stop	–
Machine dimensions L / W / H	5500 / 3710 / 2800 mm
Working height	950 mm
Workpiece dimensions L / W	250 - 2500 mm / (80°) 100 - 1000 mm
Workpiece thickness	12 - 60 mm
Chip conveyor belt	✓
Weight	8500 kg

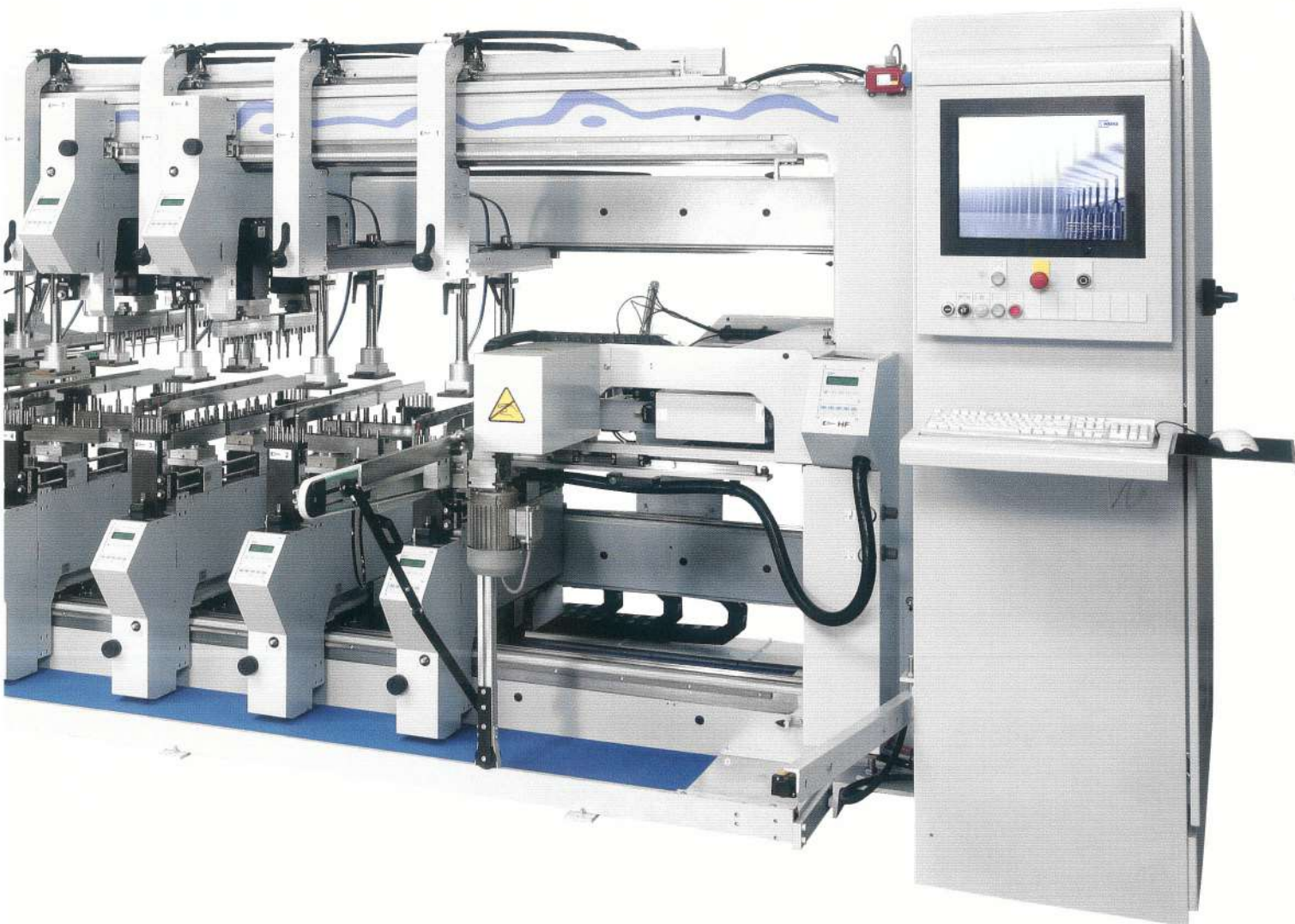
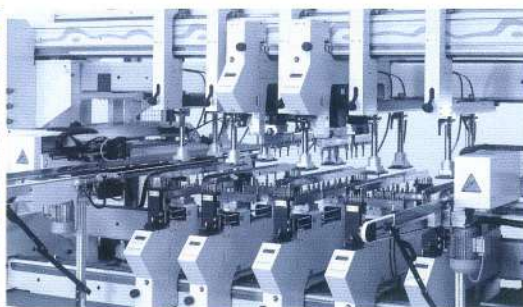
BST 507

PREMIUM DYNAMIC

Highlights:

- Auxiliary free resetting of processing aggregates
- Positioning aid system for machine set-up - automatic clamping when reaching the position
- Position control system of the supports and drilling motors during production
- High flexibility due to the proven exchangeable drilling block system
- Integrated broad chip transport belt to cover the complete drilling range
- Separated transport system - with 3 individually driven sections
- PC based control with TFT-Monitor
- Ethernet „on Board“
- Front USB interface
- woodWOP Programming System on the machine
- Operator friendly surface **topDrill**





Pictures may also show options.

Technical data of the Basic Equipment

Number of vertical supports bottom	5
Number of vertical supports top	2
Vertical drilling block with 11 spindles	14
Horizontal drilling block with 21 spindles	—
Horizontal drilling block with 11 spindles	4
NC-Stop	✓
Machine dimensions L / W / H	5500 / 3710 / 2800 mm
Working height	950 mm
Workpiece dimensions L / W	250 - 2500 mm / (80°) 100 - 1000 mm
Workpiece thickness	12 - 60 mm
Chip conveyor belt	✓
Weight	8500 kg

✓ = contained in the Basic Equipment • = optionally available — = not available

* only for single machine 9

BST 501

ACCURATE DOWELLING

Highlights:

- Simple dowel adjustment
- Auxiliary free resetting of processing aggregates
- Positioning aid system for machine set-up - automatic clamping when reaching the position
- Integrated broad chip transport belt to cover the complete drilling range
- Separated transport system - with 3 individually driven sections
- PC based control with TFT-Monitor
- Ethernet „on Board“
- Front USB interface
- woodWOP Programming System on the machine
- Operator friendly surface **topDrill**





Pictures may also show options.

Technical data of the Basic Equipment

Number of dowel tools

Dowel diameter

Dowel length

Machine dimensions L / W / H

Working height

Workpiece dimensions L / W

Workpiece thickness

Chip conveyor belt

Weight

Optimat BST 501

8 (4 per side)

8 mm

30 - 40 mm

5500 / 3710 / 2000 mm

950 mm

250 - 2500 mm / (80°) 100 - 1000 mm

12 - 60 mm

✓

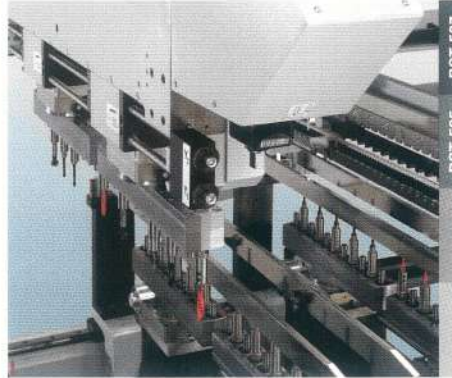
7000 kg

BASICS

BASIC EQUIPMENT



Vertical drilling from bottom



Vertical drilling from top



LCD positioning aid and control system



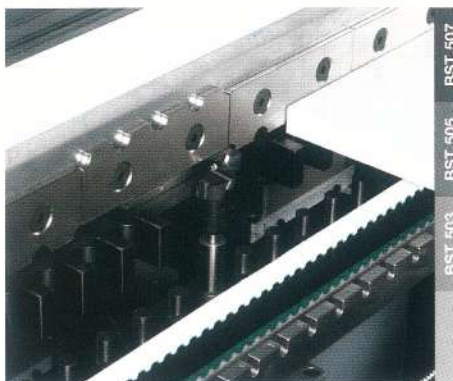
Clamping bridges (not swivelable)



Clamping bridges (swivelable)



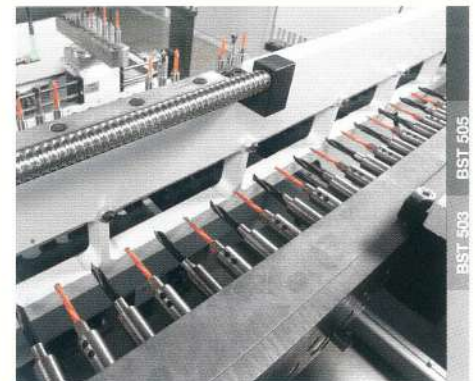
Swiveling drilling block



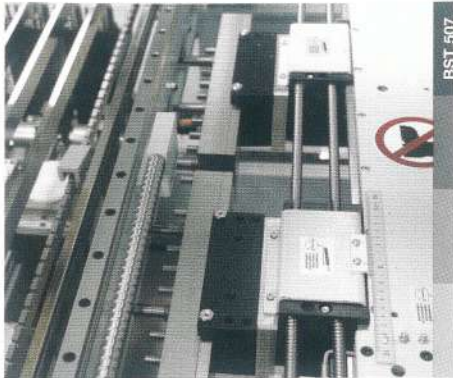
Exchangeable segments on side guide



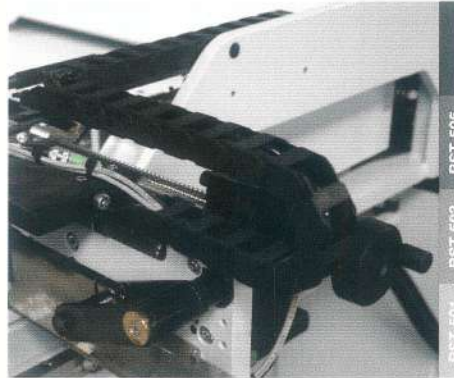
Adjustable transport unit - fixed / movable side



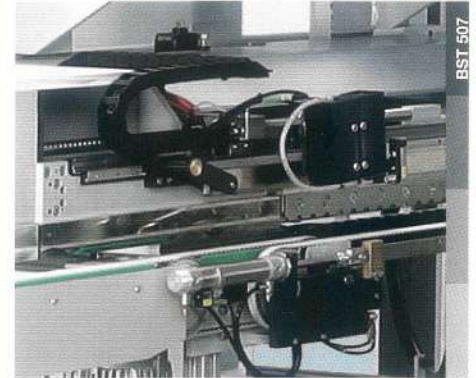
Horizontal drilling gear 2 x 21 spindles (1x fixed / 1x movable side)



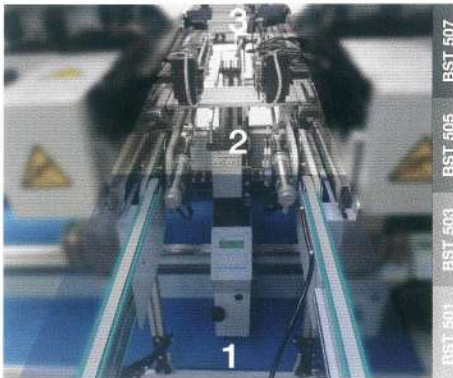
Horizontal drilling gear 4 x 11 spindles
(2x fixed / 2x movable side)



Manually adjustable stop



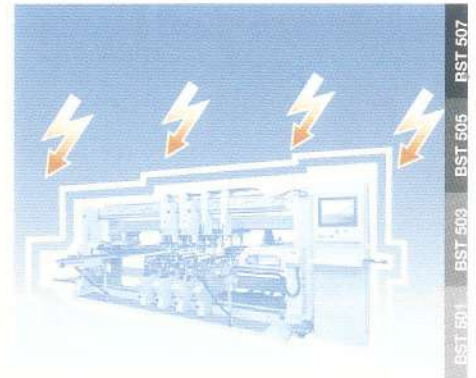
NC-Stop



3-section transport system



Chip conveyor belt



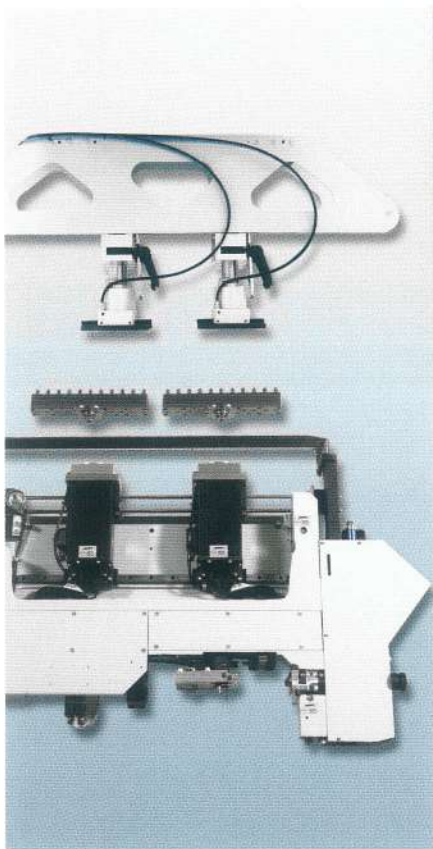
UPS (Uninterrupted power supply)

	BST 501	BST 503	BST 505	BST 507
Vertical drilling from bottom	•	✓	✓	✓
Vertical drilling from top	-	-	✓	✓
LCD positioning aid and control system	✓	✓	✓	✓
Clamping bridges (not swivelable)	•	✓	-	-
Clamping bridges (swivelable)	-	-	✓	✓
Swiveling drilling block	•	✓	✓	✓
Exchangeable segments on side guide	-	✓	✓	✓
Adjustable transport unit - fixed / movable side	✓	✓	✓	✓
Horizontal drilling block 2 x 21 spindles	-	✓	✓	-
Horizontal drilling block 4 x 11 spindles	-	-	-	✓
Manually adjustable stop	✓	✓	✓	-
NC-Stop	-	-	-	✓
3-section transport system	✓	✓	✓	✓
Chip conveyor belt	✓	✓	✓	✓
UPS (Uninterrupted power supply)	✓	✓	✓	✓

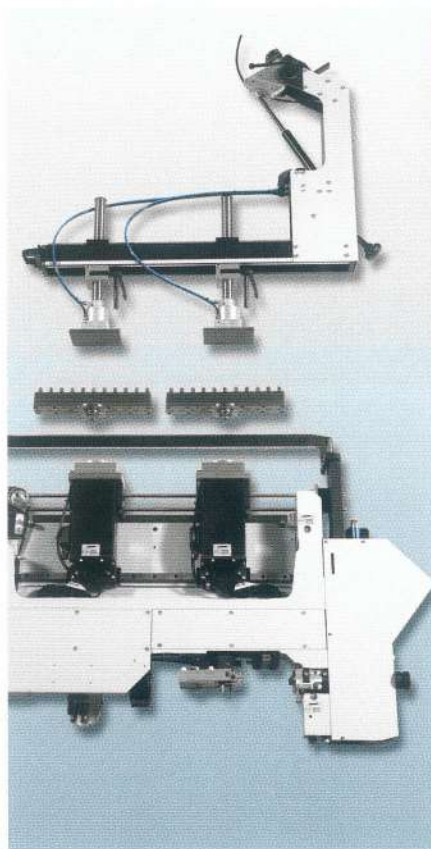
✓ = contained in the Basic Equipment • = optionally available - = not available

OPTIONS

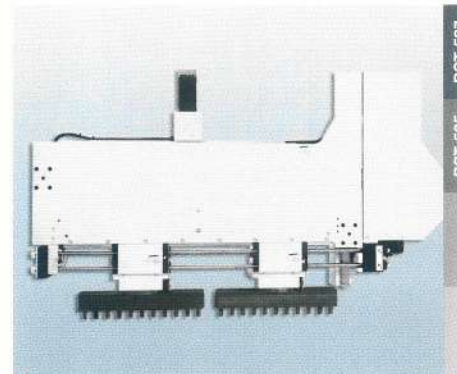
INDIVIDUALITY²



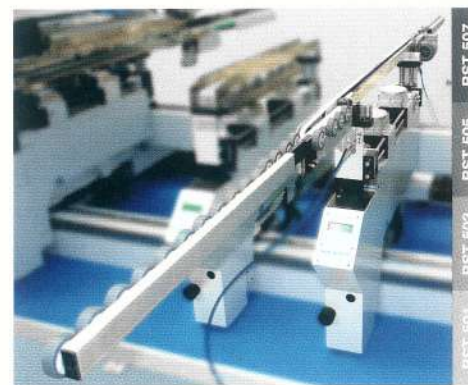
Lower drilling support unit PLUS
501 / 503



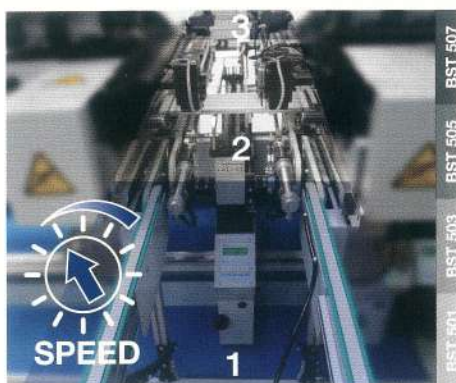
Lower drilling support unit PLUS
505 / 507



Upper drilling support unit PLUS
505 / 507



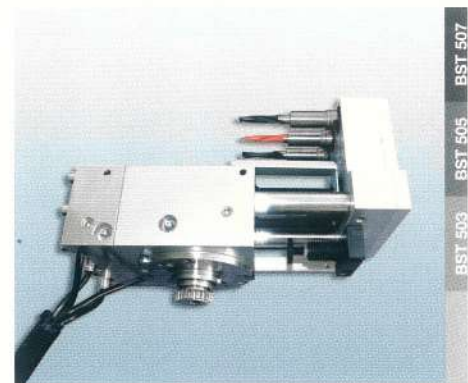
Driven workpiece support



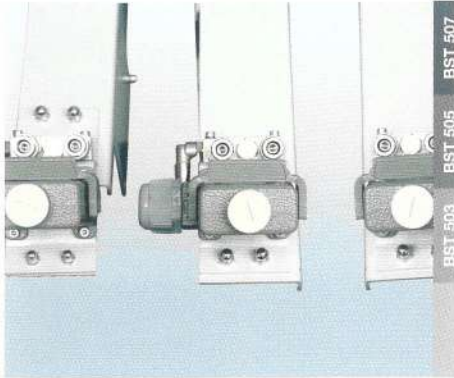
Frequency controlled transport
system



Exchangeable drilling blocks



Drilling aggregate for longitudinal
edges



Interface for drilling aggregate
for longitudinal edges



Narrow parts magazine

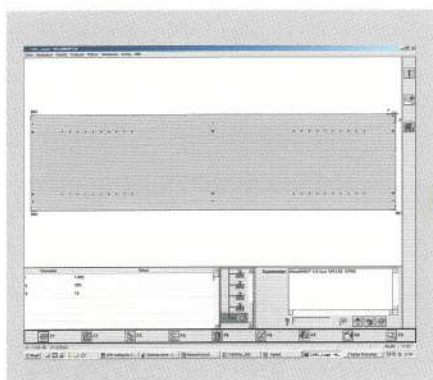


Air-conditioned cabinet

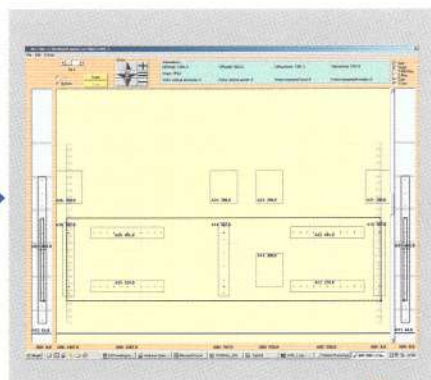
Options	BST 501	BST 503	BST 505	BST 507
Lower drilling support unit PLUS 501 / 503	max. 4	max. 3	-	-
Lower drilling support unit PLUS 505 / 507	-	-	max. 4	max. 3
Upper drilling support unit PLUS 505 / 507	-	-	max. 2	max. 2
Driven workpiece support	•	•	•	•
Frequency controlled transport system	•	•	•	•
Exchangeable drilling blocks	•	•	•	•
Drilling aggregate for longitudinal edges	-	•	•	•
Interface for drilling aggregate for longitudinal edges	-	•	•	•
Narrow parts magazine	•	•	•	•
Air-conditioned cabinet	•	•	•	•

✓ = contained in the Basic Equipment • = optionally available - = not available

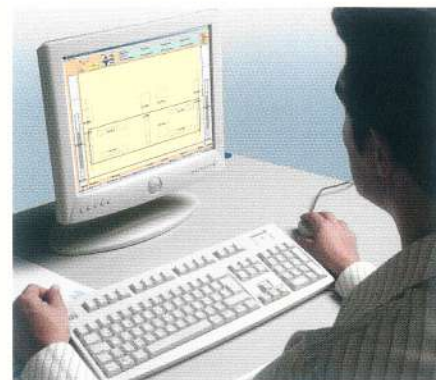
SOFTWARE READY TO RACE



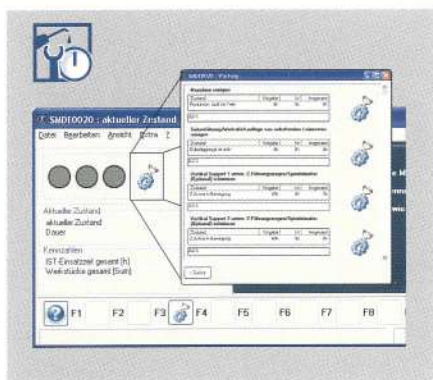
woodWOP



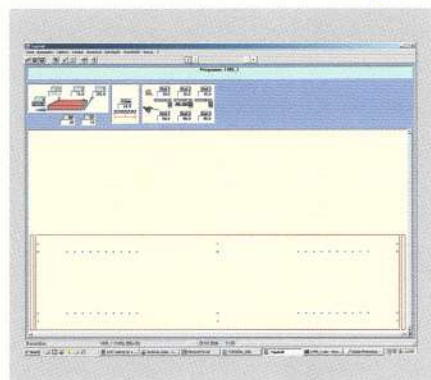
NC-Data Postprocessor



DXF post processor



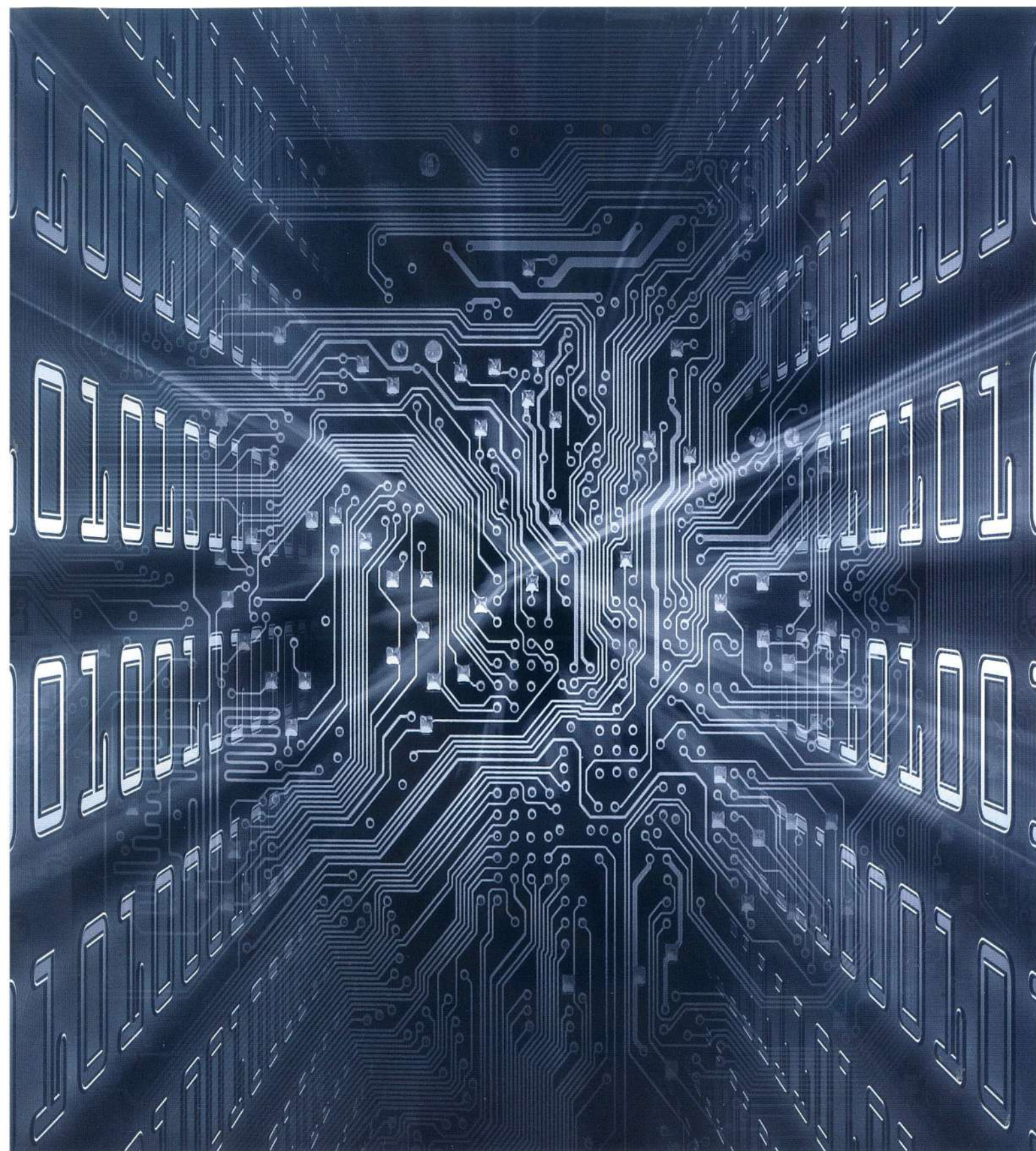
MDE Basic



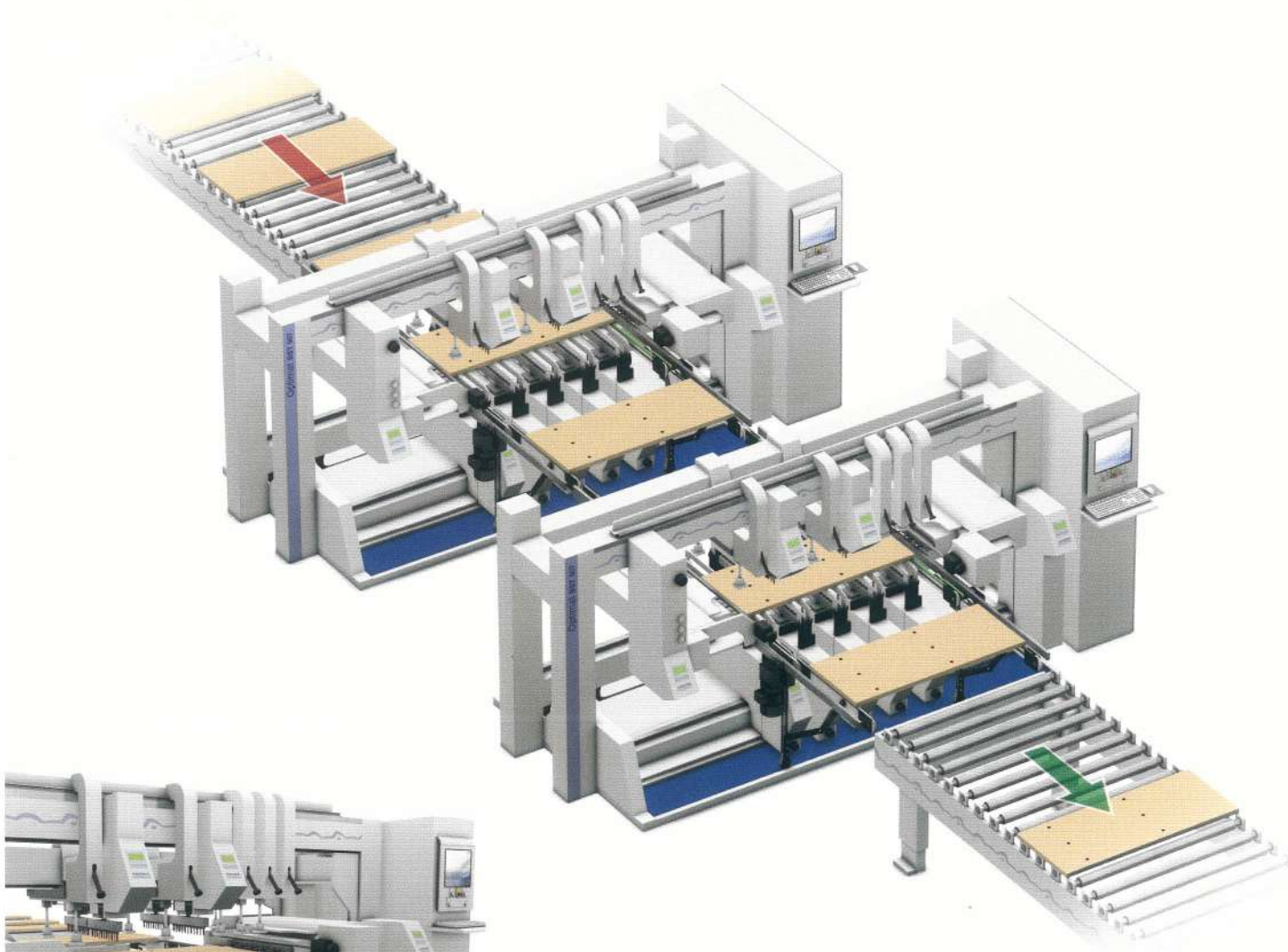
topDrill

Options	BST 501	BST 503	BST 505	BST 507
External work place woodWOP	•	•	•	•
External work place NC-Data Postprocessor	•	•	•	•
MDE Basic	•	•	•	•
topDrill	•	•	•	•
DXF post processor	•	•	•	•

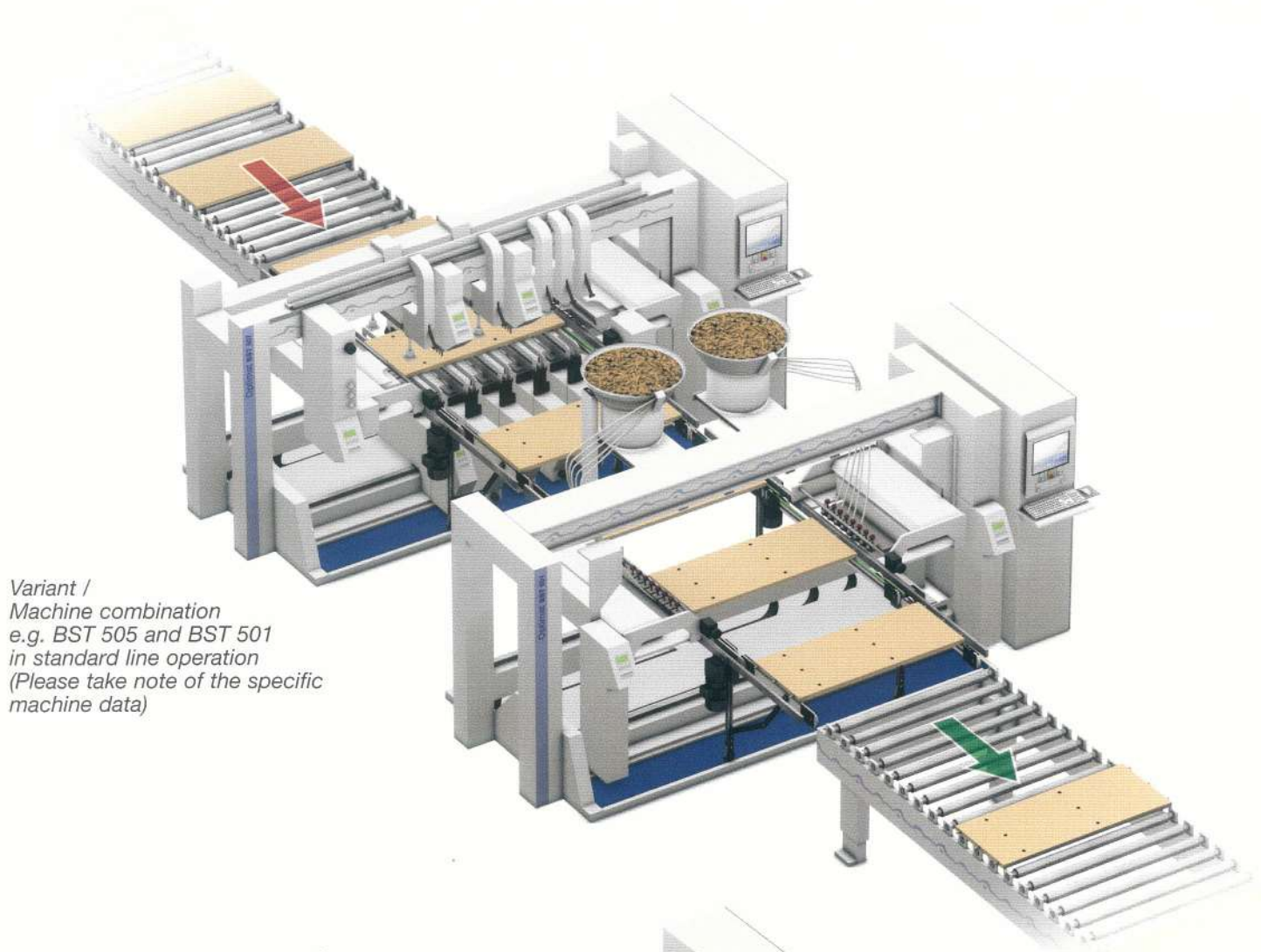
✓ = contained in the Basic Equipment • = optionally available – = not available



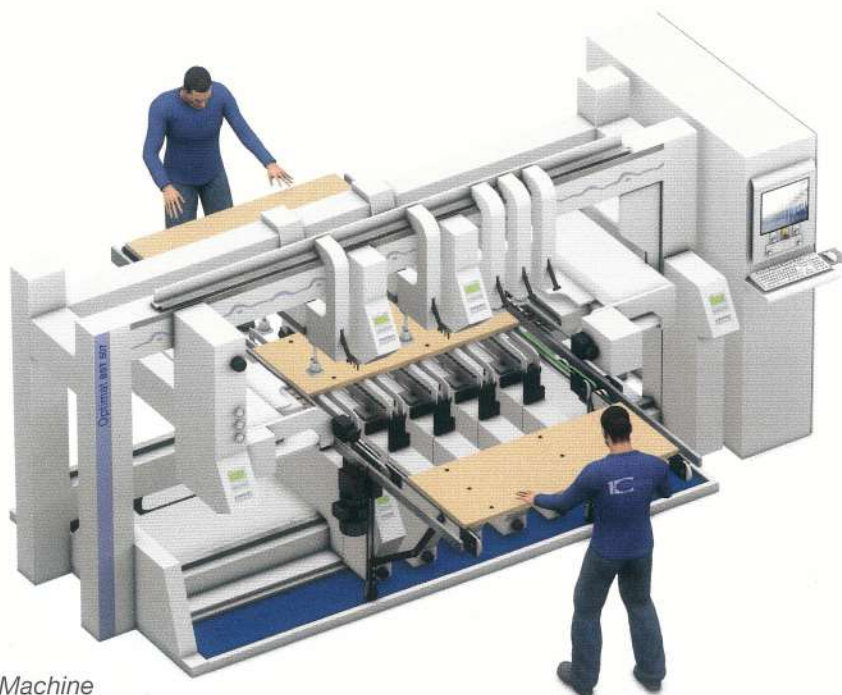
SYSTEMS ADAPTABLE!



*Variant /
Machine combination
e.g. 2 x BST 507
in standard line operation
(Please take note of the specific
machine data)*



*Variant /
Machine combination
e.g. BST 505 and BST 501
in standard line operation
(Please take note of the specific
machine data)*



*Variant Single Machine
e.g. BST 507*



Choose the Original
Choose Success!

Part of the HOMAG Group

Contact



WEEKE Bohrsysteme GmbH
Benzstrasse 10-16
33442 HERZEBROCK-CLARHOLZ
GERMANY
Tel.: +49 5245 445-0
Fax: +49 5245 445-139
info@weeke.de · www.weeke.de