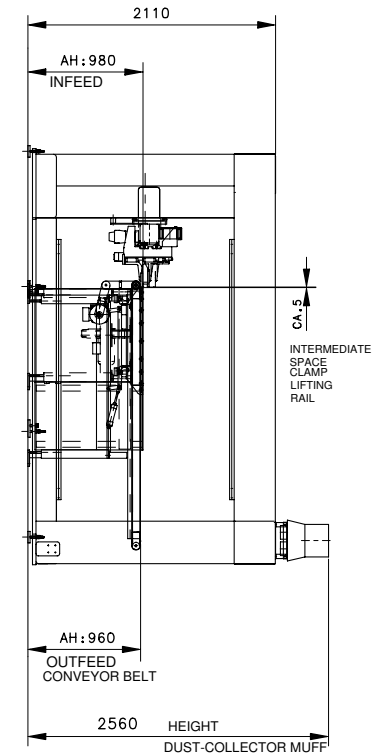



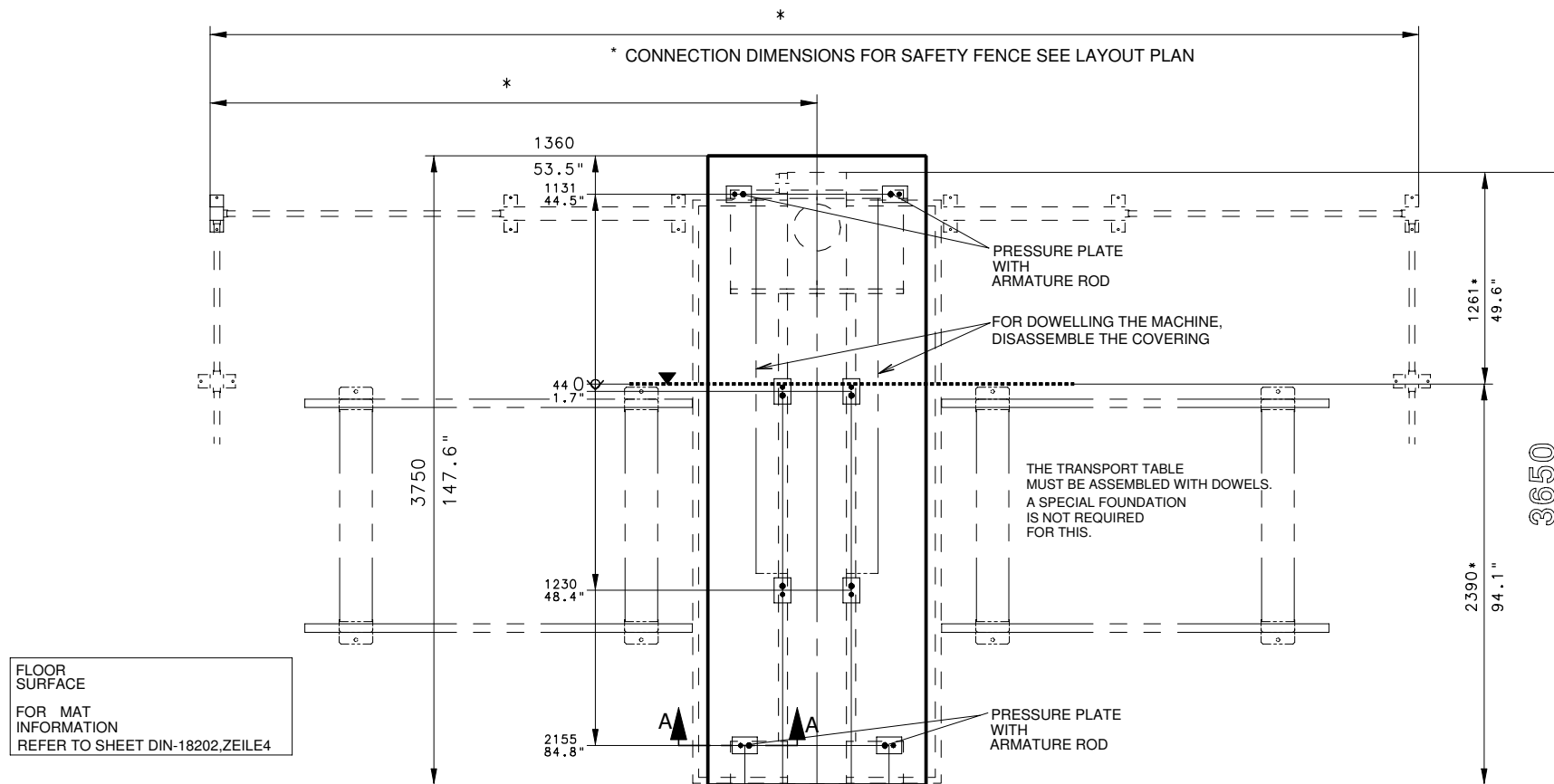


* MEASURE FOR
FOUNDATION PLAN
SEE PLAN 5-350-94-4040



SCHEMATIC SIDE VIEW

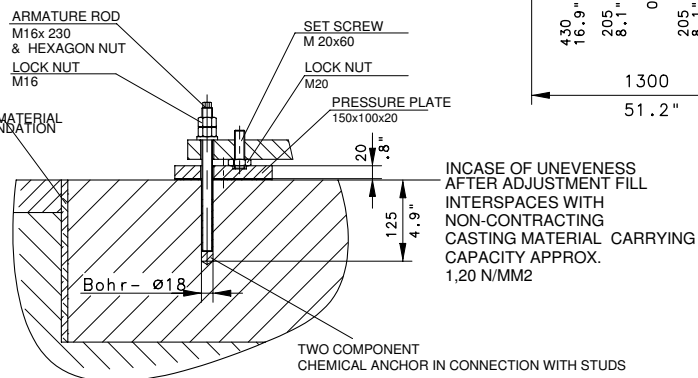
WORKPIECE SIZES				WITHOUT OUR PERMISSION THIS DRAWING MUST NOT BE REPRODUCED NOR DUPLICATED NOR MADE ACCESSIBLE TO THIRD PARTIES OR COMPETITORS
LENGTH MIN./MAX.		200 MM / 2500 MM		
WIDTH MIN./MAX.		IN PROCESSING	70 MM / 1000 MM	
WIDTH MIN./MAX.		IN PASS	70 MM / 1300 MM	
THICKNESS MIN./MAX.		4 MM / 80 MM		
	ELECTRICAL GROUNDING POINT - MACHINE FUNCTION NOT GUARANTEED WITHOUT PROPER GROUNDING IN ACCORDANCE WITH LOCAL ELECTRICAL CODE			
	OUTER EDGE OF CHAIN TRACK RESP. FIXED EDGE WORKPIECE OVERHANG "0"			
	COMPRESSED AIR CONECTION INNER- R1/2" SUPPLY R1" AIR PRESSURE IN SUPPLY LINE MIN. 7 BAA 100 PSI STANDARD COMPRESSED AIR QUALITY ACCORDING TO ISO 8573- 1 QUALITY CLASS 4 IN CASE OF WATER CONTENT QUALITY CLASS 3 IN CASE OF TOTAL OIL CONTENT AND SOLID IMPURITIES			
FOR THE ROOM CONDITIONS DURING MACHINE OPERATION PLEASE SEE OUR SAFETY REGULATIONS				



_ Schnitt A-A _
M %

10MM 0.39" EXPANSION JOINT WITH POLYSTYROLE MATERIAL AROUND THE STRIPED FOUNDATION

DEPTH ACCORDING TO NATURE OF GROUND
FLOOR LOAD APPROX. 200N/CM²
AREA OF THE MACHINE BEDS MIN.
CONCRETE THICKNESS = 200 MM
CONCRETE QUALITY C25/30
XC1 CAPABLE OF BEARING PRESSURE AND TENSION
THE FOUNDATION HAS TO BE AT GROUND LEVEL
EVENESS OF FLOOR: TOLERANCE = +/- 10MM +/- 0,4"



IN CASE OF FLEXIBLE AND UNFIRM UNDERGROUND, WE RECOMMEND STRIP FOUNDATIONS

THE CUSTOMER MUST DESIGN THE FOUNDATION WEEKE SHALL EXCEPT NO LIABILITY IN THIS REGARD.

SUBJECT TO CHANGE

TECHNICAL DATA		OPTIMAT BHX 500
SPEED	X -AXIS CLAMPS	138 M/MIN
	Y -AXIS	80 M/MIN
	Z -AXIS	50 M/MIN
	Z -AXIS PRESSURE PLATE	27 M/MIN
PNEUMATIC	STANDARD COMPRESSED AIR QUALITY ACCORDING TO ISO 8573- 1 QUALITY CLASS 4 IN CASE OF WATER CONTENT QUALITY CLASS 3 IN CASE OF TOTAL OIL CONTENT AND SOLID IMPURITIES	
	CONNECTION	R 1"
	AIR PRESSURE IN SUPPLY LINE MIN. 7 BAA	100 PSI
	COMPRESSED AIR CONSUMPTION	CA.2500 NL/MIN
DUST COLLECTION	EXTRACTION PORT :	Ø 280 HEIGHT APPROX. 2550
	TOTAL DUST EXTRACTION CAPACITY	MIN. 5500 M3/H
	AIR VELOCITY MIN.25 M/SEC	
	AM EXTRACTION HOSE LOSS OF PRESSURE MIN.2500 PA	
ELECTRIC/ELECTRONIC	PROTECTION MODE	IP53
	OPERATING VOLTAGE	3* 415 VOLT, ±5%
	FREQUENCY	50 Hz
	NOMINAL CURRENT APPROX. 35 A	
	RECOMMENDED BACK-UP FUSE 50 A	
	TOTAL CONNECTED LOAD APPROX. 19,5 KW	
THE MACHINE IS NOT DESIGNED FOR A CONNECTION TO A NETWORK WITH FAULT CURRENT PROTECTION SWITCH		
LOADING MEASURE	LENGTH CA.	* MM
	WIDTH CA.	* MM
	HEIGHT APPROX. :	* MM
FOUNDATION	WEIGHT OF MASCHINE APPROX 5500KG	
	SURFACE PRESSURE IN THE AREA OF THE POINTS OF SUPPORT: 1,20 N/MM2	
	THICKNESS OF CONCRETE MIN. 200 MM 7.9"	
	CONCRETE QUALITY C25/30 XC1 CAPABLE OF BEARING PRESSURE AND TENSION	
	THE FOUNDATION HAS TO BE AT GROUND LEVEL	
FOR THE ROOM CONDITIONS DURING MACHINE OPERATION PLEASE SEE OUR SAFETY REGULATIONS		